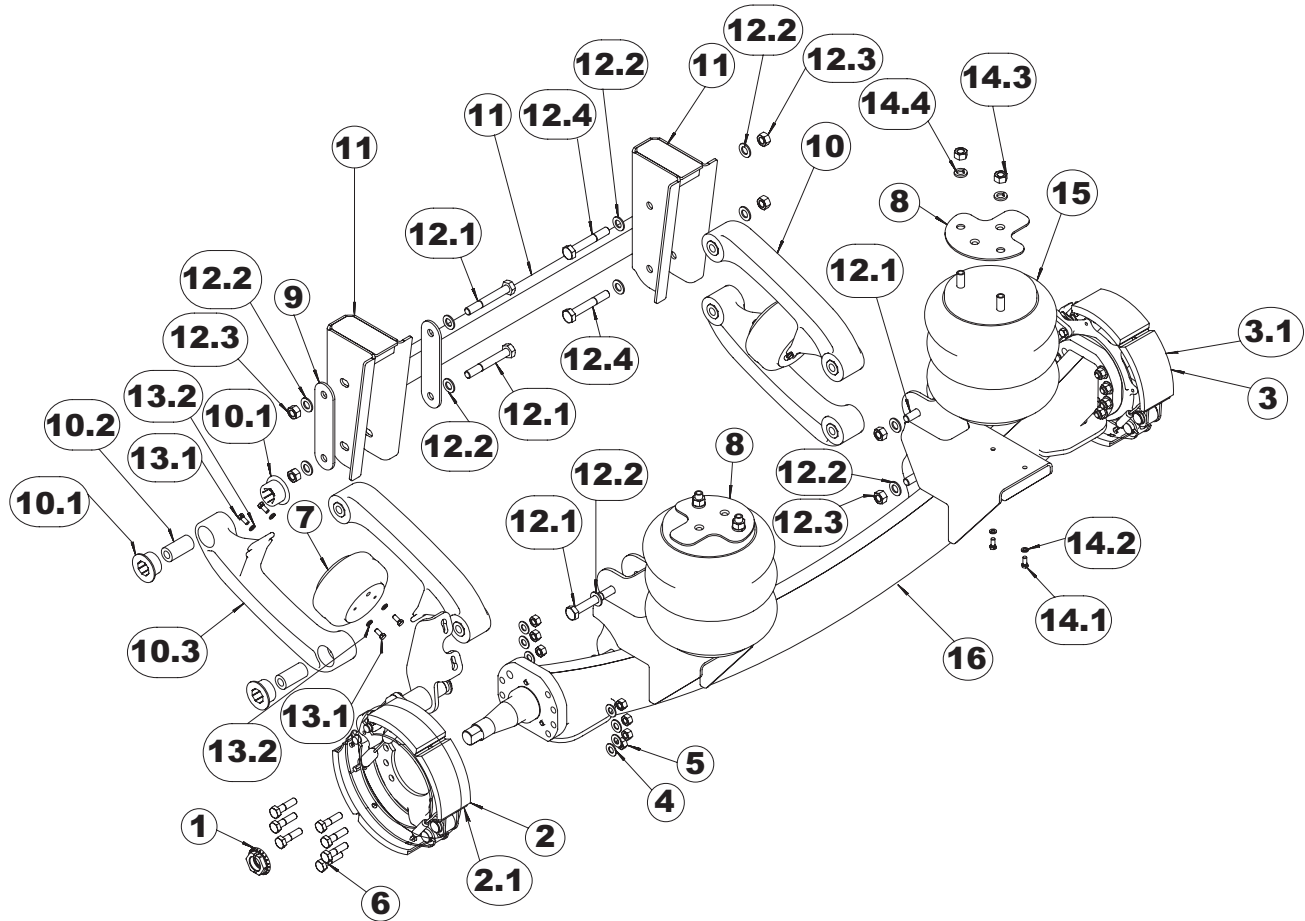


# H PARTS LIST

## COMPOSITE FX Trailer Mount Parts List

LIT NO: H680

DATE: December 2005



ITEM	PART NUMBER	DESCRIPTION	QUANTITY
1	003269	SPINDLE NUT	2
2	003274-1	15 X 4 BRAKE ASSEMBLY, LH	1
2.1	003275	QUICK CHANGE BRAKE KIT	1
3	003274-2	15 X 4 BRAKE ASSEMBLY, RH	1
3.1	003275	QUICK CHANGE BRAKE KIT	1
4	SA-1500-7	5/8" FLAT WASHER HARD F436	14
5	SA-8900-4	5/8-11 LOCK NUT	14
6	003349-1	5/8-11 X 2-1/2 HH BOLT	14
7	005079	AIR SPRING (LIFT)	2
8	005168	UPPER A/S PLATE, TRAILER	2
9	005707	ALIGNMENT PLATE	2
10	005733	BEAM ASSEMBLY	4
10.1	004931	BUSHING, URETHANE	4
10.2	004932	INNER METAL	2
10.3	005734	BEAM	1
11	005788-D/F/H	FRAME BRACKET WELDMNT 34"/38"/42"	1

ITEM	PART NUMBER	DESCRIPTION	QUANTITY
12	006186	PIVOT BOLT KIT TRAILER	1
12.1	SA-1000-90	3/4-10 X 5.5 HHB GR 8	6
12.2	SA-1500-6	3/4" FLAT WASHER HARD F436	16
12.3	SA-8900-3	3/4-10 LOCK NUT	8
12.4	003349-8	3/4-10 X 5 HHB GR 8	2
13	A-1134	AIR SPRING BOLT KIT	1
13.1	SA-1100-2	3/8-16 X .875" HHB GR. 5	8
13.2	SA-1600-1	3/8 MED LOCK WASHER	8
14	A-13075	RIDE SPRING BOLT KIT	2
14.1	SA-1100-2	3/8-16 X .875" HHB GR. 5	2
14.2	SA-1600-1	3/8 MED LOCK WASHER	2
14.3	SA-1300-8	3/4-16 HEX NUT GRADE B	2
14.4	SA-1600-5	3/4" LOCK WASHER	2
15	B-14487	AIR SPRING (RIDE)	2
16	CONTACT	HENDRICKSON WITH MODEL NUMBER	1

---

[www.hendrickson-intl.com](http://www.hendrickson-intl.com)



Auxiliary Axle Systems  
277 North High Street  
Hebron, OH 43025 USA  
740.929.5600  
Fax 740.929.5601

Auxiliary Axle Systems  
250 Chrysler Drive, Unit #3  
Brampton, ON L6S 6B6 Canada  
905.789.1030  
Fax 905.789.1033