

TECHNICAL PROCEDURE

TIREMAAX® CP & PRO

SUBJECT: Wheel-end Considerations

LIT NO: T57001

DATE: February 2012

NOTE: The information in this document applies to TIREMAAX® PRO and TIREMAAX CP with integrated hubcap (introduced in first quarter 2012).

The purpose of this document is to share special wheel-end design considerations, included in *L868 TIREMAAX ordering guide*, relative to TIREMAAX CP and PRO applications. Considerations include:

1. When using a spindle **castellated nut system**, the extended hubcap option (Figure 1) must be used to avoid interference with the Cotter Pin (Figure 2). **The Cotter Pin must not exceed more than one inch in length**, as shown. Minimum hub bore depth (Figure 3) requirements still apply.
2. A minimum **hub bore depth** (Figure 3) is required when installing the TIREMAAX system. This hub requirement helps keep proper clearance between the hubcap assembly and the spindle nut system, thus preventing contact or interference between these parts which could result in wheel-end failure.

Any hub may be used with the TIREMAAX system, provided a minimum hub bore depth requirement (dimension "A", Figure 3) is maintained.

- A. If hub bore depth is **greater than** or equal to dimension "A", the hub is compatible with the TIREMAAX system.
- B. If hub bore depth is **less than** dimension "A", you must contact Hendrickson.

Refer to *T51002 TIREMAAX CP & PRO Installation* for installation details.

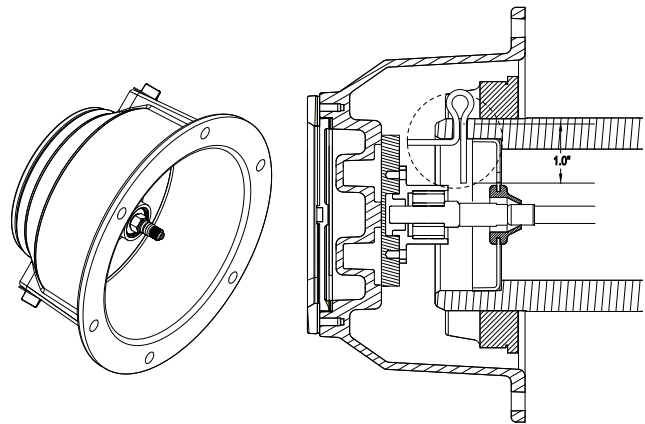
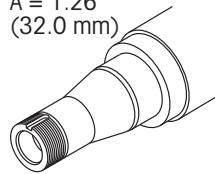


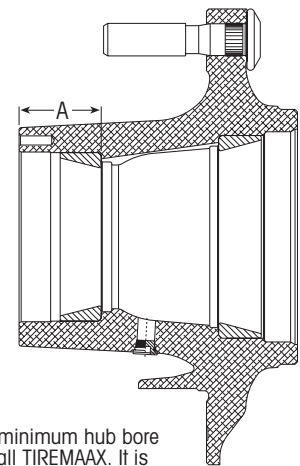
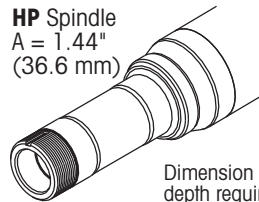
Figure 1: *Extended hubcap*

Figure 2: *Castle nut cotter key interference*

HN Spindle
A = 1.26"
(32.0 mm)



HP Spindle
A = 1.44"
(36.6 mm)



Dimension "A" is the minimum hub bore depth required to install TIREMAAX. It is measured from the bottom of the bearing cup to the hubcap mounting surface.

Figure 3: *Minimum hub bore depth requirement*

Call Hendrickson at 1-866-RIDEAIR (743-3247), if you have any questions.

www.hendrickson-intl.com

HENDRICKSON

Hendrickson Canada
250 Chrysler Drive, Unit #3
Brampton, ON Canada L6S 6B6
905.789.1030
Fax 905.789.1033

Trailer Commercial Vehicle Systems
2070 Industrial Place SE
Canton, OH 44707-2641 USA

866.RIDEAIR (743.3247)
330.489.0045
Fax 800.696.4416

Hendrickson Mexicana
Av. Industria Automotriz #200
Parque Industrial Silva Aeropuerto
Apodaca, N.L., México C.P. 66600
+52 (81) 8288.1300
Fax +52 (81) 8288.1301