

H PARTS LIST

RT™/ RTE™ Series Rear Suspension

LIT NO: SP-168

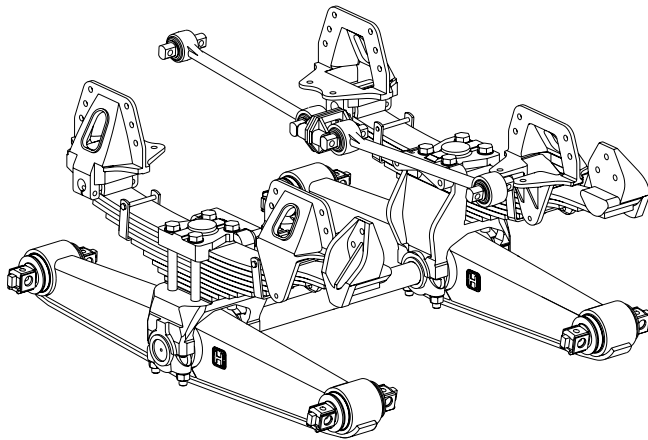
DATE: July 2014

REVISION: D

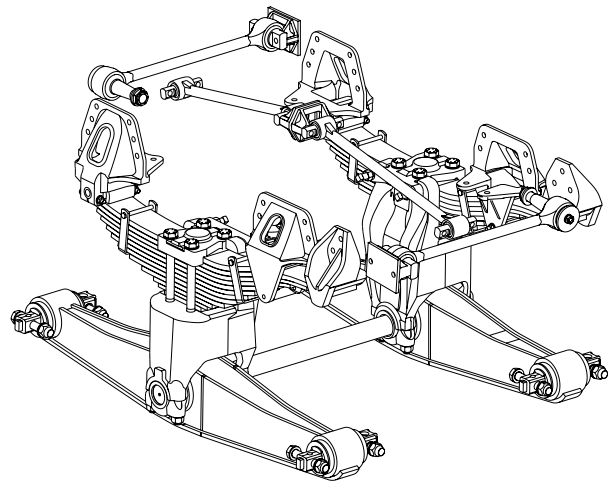
CONTENTS

DESCRIPTION	PAGE	DESCRIPTION	PAGE
RT/RTE 340/343/400/403/460/463	2	Selection Guides	
RT/RTE 480/503/520/523	4	■ Cross Tube	8
RT 650/700 Heavy-Duty	6	■ Top Pad Bolt	8

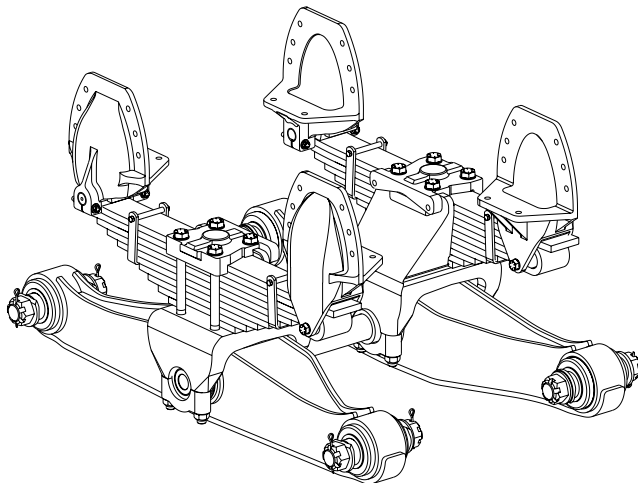
RT/RTE 340/343/400/403/460/463

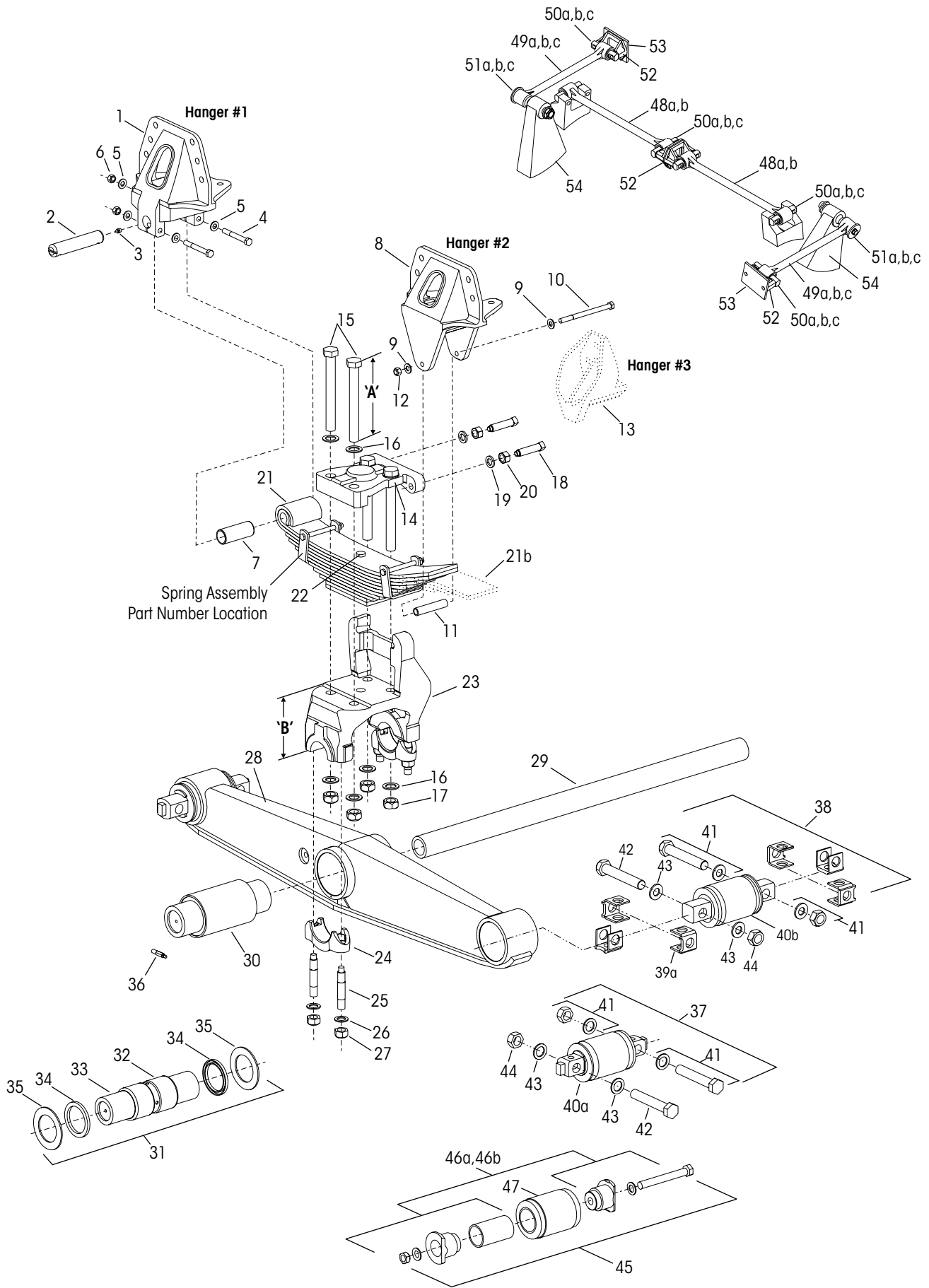


RT/RTE 480/503/520/523



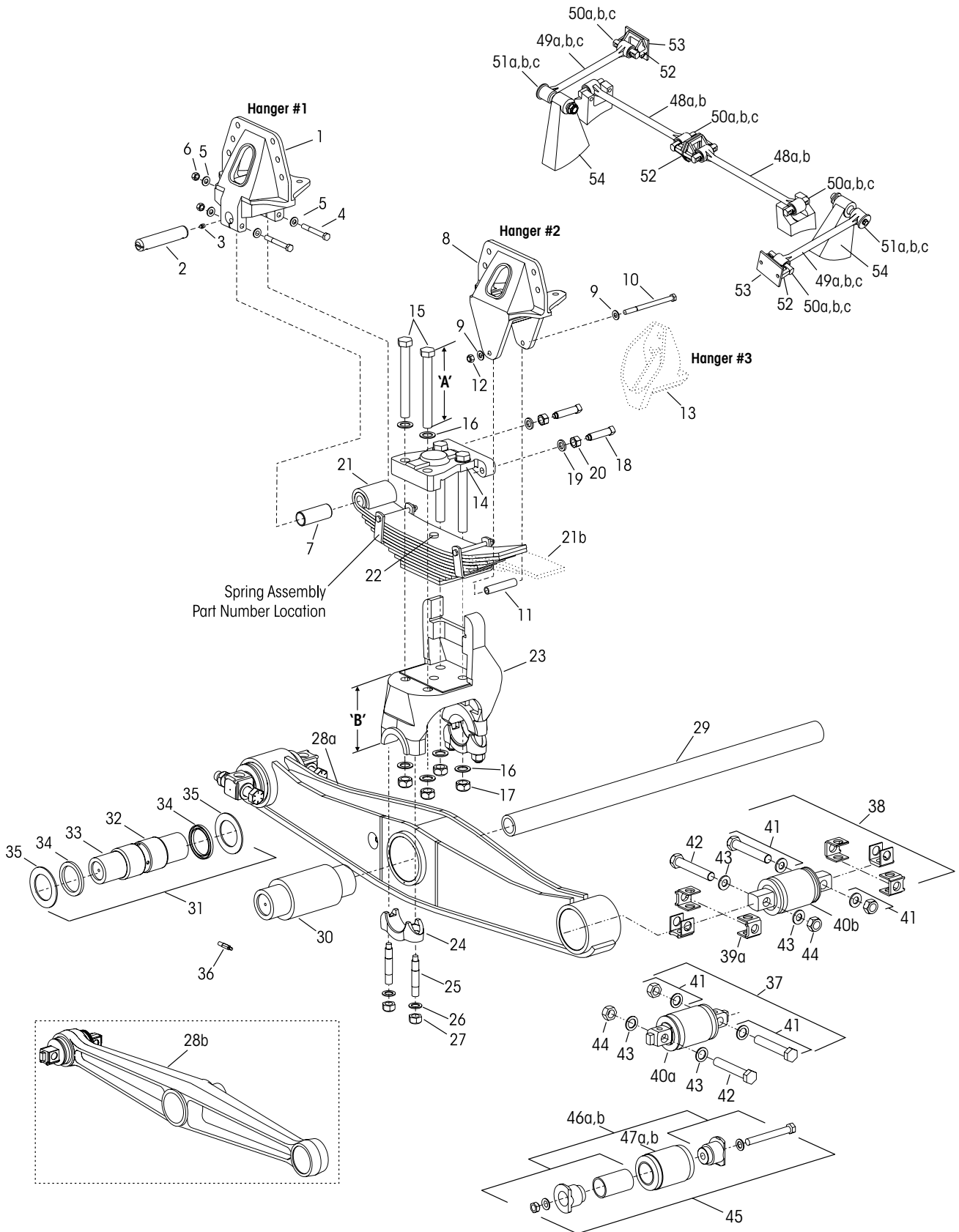
HEAVY-DUTY RT 650/700





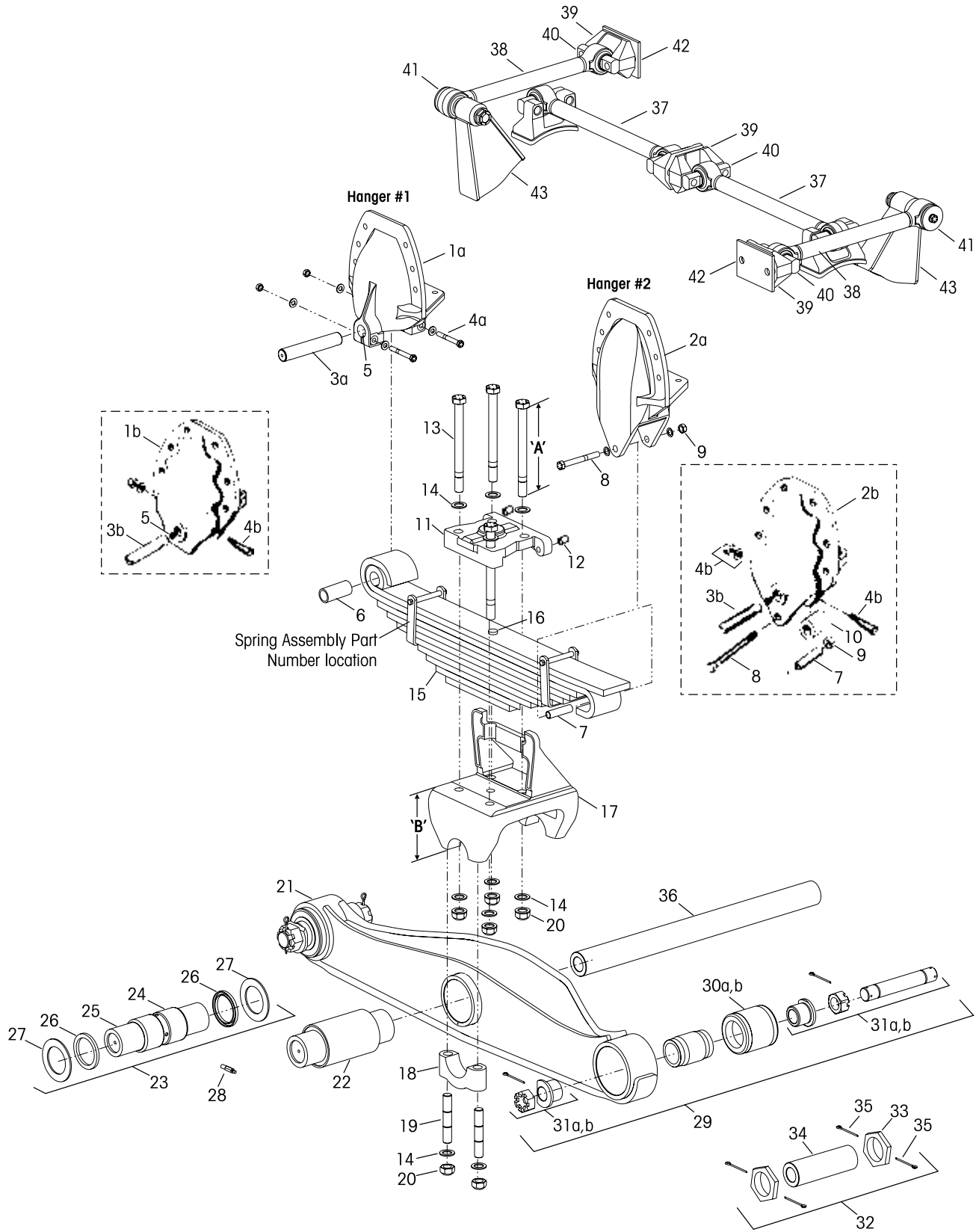


KEY NO.	PART NO.	DESCRIPTION	NO.REQ.	KEY NO.	PART NO.	DESCRIPTION	NO.REQ.
1		Hanger #1, Forward Spring Hanger, Double Lock Pin, See Selection Guide 45745-038	2	31		Bronze Center Bushing Service Kit, Two Beams Includes Key Nos. 32-36a	
2	43146-000	Pin-1 3/8" Diameter Double Lock	2		30436-000L	RT/RTE 340	
3	33117-000	Lube Fitting	2		30437-000L	RT/RTE 463, RT/RTE 343-403	
	29828-035	Front Lock Bolt Service Kit, One Hanger Includes Key Nos. 4-6		32	30240-001	**Bronze Center Bushing RT/RTE 340	2
4	24531-009	1/2"-13 UNC Bolt	4		30240-002	**Bronze Center Bushing RT/RTE 343-463	2
5	22962-011	1/2" Washer	8	33		Beam Center Sleeve	2
6	49846-000	1/2"-13 UNC Locknut	4		14684-000	RT/RTE 340	
7	30057-008L	Spring Eye Bushing, 1 3/8" I.D.	2		14685-000	RT/RTE 343-463	
8		Hanger #2, Rear Spring Hanger See Selection Guide 45745-038	2	34		Beam Center Seal	4
9	22962-011	1/2" Hardened Washer	4		30333-000	RT/RTE 340	
	29828-023	Rebound Bolt & Spacer Kit, One Hanger Includes Key Nos. 10-12			30334-000	RT/RTE 343-463	
10	24531-005	1/2"-13 UNC Bolt	2	35		Thrust Washer	8
11	00194-000	Spacer	2		32364-000	RT/RTE 340	
12	49846-000	1/2"-13 UNC Locknut	2		32365-000	RT/RTE 343-463	
13		Hanger #3, Extended Leaf Spring Hanger See Selection Guide 45745-038	2	36	30087-000	Lube Fitting w/ Forged Beam	2
14	35064-000	Top Pad	2		58758-001	Lube Fitting w/ Fab Beam	2
15	30550-	Bolt, Specify Length - Dim. 'A' See chart on page 8	8			Bar Pin End Bushing Kit, One Wheel End Non-Shim Type, Includes Key No. 40a, 41	
16	22962-006	1" Washer	16	37	34013-087L	Shim Type, Includes Key Nos. 39a, 40b, 41	
17	08017-000	1"-14 UNS Locknut	8	38	34013-088L	Rotating Shim Type, Includes Key Nos. 39a, 40c, 41	
	35370-002	Set Screw Service Kit, One Set Includes Key Nos. 18-20		Not Shown	34013-188L		
18	06813-000	3/4"-10 UNC Square Head Set Screw	4	39a	50130-000	Shim - 0.19"/0.19"	8
19	17339-000	Set Screw Lock washer	4	b	50131-000	Shim - 0.25"/0.12" (as required)	
20	17342-000	3/4"-10 UNC Set Screw Locknut	4	40		*Bar Pin End Bushing	4
21		Spring Assembly	2	a		**Non-Shim Type	
	53383-000	RT 340/343 Standard Duty, <i>Replaces 58193-000</i>		b		**Shim Type	
	53384-000	RT 340/343 Light Duty, <i>Replaces 58194-000</i>		c		**Rotating, Shim Type (Not Shown)	
	45027-000	RT 400/403		41	34013-104	Bar Pin End Bushing Fastener Kit, One Wheel End , Includes Key Nos. 42-44	
	47057-000	RT 460-523		42		*1"-8 UNC Hex Bolt	2
	53382-000	RTE 340/343, <i>Replaces 58192-000</i>		43		*1" Hardened Washer	4
	45121-000	RTE 400/403		44		*1"-8 UNC Locknut	2
	45322-000	RTE 460-503		45		Rubber End Bushing and Adapter Service Kit, One Wheel End	
22	66662-001	Center Bolt, Cut to Length, <i>Replaces 05069-000</i>	2		34013-049L	RT/RTE 343-403, Includes Key Nos. 46a, 47	
23		Saddle Assembly, Specify Height-Dim. 'B' Includes Key Nos. 24-27	2		34013-073L	RT/RTE 463, Includes Key Nos. 46b, 47	
	31017-023	RT/RTE 340, 6 3/16" Height, (Casting No. 46529)		46		Adapter w/o Bushing Service Kit, One Wheel End	
	31017-025L	RT/RTE 340, 7 3/16" Height (Casting No. 46138)		a	45000-007L	RT/RTE 340-403	
	31017-022L	RT/RTE 343-403, 6" Height (Casting No. 57167)		b	21140-034L	RT/RTE 463	
	31017-109L	RT/RTE 343-403, 7 3/16" Height (Casting No. 57143)		47	45900-000L	**Rubber End Bushing	4
	31017-096L	RT/RTE 460/463, 6" Height (Casting No. 57457)		48		***Two-Piece Longitudinal Torque Rod Assembly with Bushing , Straddle/Straddle	
	31017-110L	RT/RTE 460/463, 7 3/16" Height (Casting No. 57155)		a	60218-000	ULTRA ROD®	
24	06662-000	Saddle Cap RT/RTE 340	4	b	65781-001	XTRB®	
	58795-000	Saddle Cap RT/RTE 343-463	4	49		***Two-Piece Transverse Torque Rod Assembly with Bushing , Straddle/Taper	
25		7/8"-14 UNF Saddle Cap Stud	8	a	60215-000	ULTRA ROD	
	07002-000	RT/RTE 340		b	65781-000	ULTRA ROD PLUS	
	06696-000	RT/RTE 343-463		c	65781-002	XTRB	
26	22962-002	7/8" Washer	8	50		Torque Rod Straddle Bushing	4
27	04842-000	7/8"-14 UNF Saddle Cap Nut	8	a	47691-000L	ULTRA ROD	
28		Equalizing Beam Assembly See Selection Guide 45745-147	2	b	64400-002L	ULTRA ROD PLUS	
29		Cross Tube, See chart on page 8	1	c	66649-002L	XTRB	
	44642-	RT/RTE 340, 1 5/16" Diameter		51		Torque Rod Taper Bushing	2
	44643-	RT/RTE 343-463, 27/16" Diameter		a	64697-000H	ULTRA ROD	
30		**Rubber Center Bushing	2	b	64400-004L	ULTRA ROD PLUS	
	06664-000L	RT/RTE 340		c	66649-004L	XTRB	
	22279-000L	RT/RTE 340 w/Loose End Plug		52	22186-000	Torque Rod Frame Bracket	2
	49400-000L	RT/RTE 343/403		53	45045-003	Backup Plate	As Req.
	49600-000L	RT/RTE 343/403 w/Loose End Plug		54		*****Transverse Rod Axle Bracket	2
	29483-005L	RT/RTE 463, Optional for RT 343/403, Requires Transverse Rods		Not Shown	70867-001	P-80 Lubricant - 10 ml.	per Bushing 1
	34013-097L	RT/RTE 463 w/ Loose End Plug, Optional for RT 343/403, Requires Transverse Rods					





KEY NO.	PART NO.	DESCRIPTION	NO.REQ.	KEY NO.	PART NO.	DESCRIPTION	NO.REQ.
1		Hanger #1, Forward Spring Hanger, Double Lock Pin, See Selection Guide 45745-038	2	35	32365-000	Thrust Washer	8
2	43146-000	Pin – 1 3/8" Diameter Double Lock	2	36	30087-000	Lube Fitting	2
3	33117-000	Lube Fitting	2	Bar Pin End Bushing Kit, One Wheel End			
	29828-035	Forward Hanger Lock Bolt Service Kit, One Hanger, Includes Key Nos. 4-6		37	34013-087L	Non-Shim Type, Includes Key No. 40a, 41	
4	24531-009	1/2"-13 UNC Bolt	4	38	34013-088L	Shim Type, Includes Key Nos. 39a, 40b, 41	
5	22962-011	1/2" Washer	4	Not Shown	34013-188L	Rotating Shim Type, Includes Key Nos. 39a, 40c, 41	
6	49846-000	1/2"-13 UNC Locknut	8	39a	50130-000	Shim - 0.19"/0.19"	8
7	30057-008L	Bushing 1 3/8" I.D.	2	b	50131-000	Shim - 0.25"/0.12" (as required)	
8		Hanger #2, Rear Spring Hanger See Selection Guide 45745-038	2	40		*Bar Pin End Bushing	4
	29828-023	Rebound Bolt & Spacer Service Kit, One Hanger Includes Key Nos. 10-11		a		**Non-Shim Type	
9	22962-011	1/2" Hardened Washer	4	b		**Shim Type	
10	24531-005	1/2"-13 UNC Bolt	2	c		**Rotating, Shim Type (Not Shown)	
11	00194-000	Spacer	2	41	34013-104	Bar Pin End Bushing Fastener Kit, One Wheel End, Includes Key Nos. 42-44	
12	49846-000	1/2"-13 UNC Locknut	2	42		*1"-8 UNC Hex Bolt	2
13		Hanger #3, Extended Leaf Spring Hanger See Selection Guide 45745-038	2	43		*1" Hardened Washer	4
14	35064-000	Top Pad	2	44		*1"-8 UNC Locknut	2
15	30550-	Bolt, Specify Length - Dim. 'A' See chart on page 8	8	45		Rubber End Bushing and Adapter Service Kit, One Wheel End	
16	22962-006	1" Washer	16		34013-050L	RT 503/523, RTE-503, Includes Key Nos. 46a, 47a	
17	08017-000	1"-14 UNS Locknut	8		34013-051L	RT 523, 6" Length Includes Key Nos. 46b, 47b	
	35370-002	Set Screw Service Kit, One Set Includes Key Nos. 18-20		46		End Bushing Adapter Service Kit, One Wheel End	
18	06813-000	3/4"-10 UNC Square Head Set Screw	4	a	21140-034L	RT/RTE 480-523, 5 3/4" Length	
19	17339-000	Set Screw Lock washer	4	b	21140-033L	RT/RTE 520/523, 6" Length	
20	17342-000	3/4"-10 UNC Set Screw Locknut	4	47		**Rubber End Bushing	4
21		Spring Assembly	2	a	29878-001L	RT/RTE 480/503, 5 3/4" Length	
	47057-000	RT 480-523		b	45407-000L	RT/RTE 520/523, 6" Length	
	45322-000	RTE 480/503		48		***Two-Piece Longitudinal Torque Rod Assembly with Bushing, Straddle/Straddle	
22	66662-001	Center Bolt, Cut to Length, <i>Replaces 05069-000</i>	2	a	60218-000	ULTRA ROD®	
23		Saddle Assembly, Specify Height-Dim. 'B' Includes Key Nos. 24-27	2	b	65781-001	XTRB®	
	31017-053	6" Height, (Casting No. 32796)		49		***Two-Piece Transverse Torque Rod Assembly with Bushing, Straddle/Taper	
	31017-077	7 3/16" Height, (Casting No. 47476 or 47665)		a	60215-000	ULTRA ROD	
	31017-108	11" Height, (Casting No. 50965)		b	65781-000	ULTRA ROD PLUS	
24	58795-000	Saddle Cap, Replaces 48545-000	4	c	65781-002	XTRB	
25	06696-000	7/8"-14 UNF Saddle Cap Stud	8	50		Torque Rod Straddle Bushing	4
26	22962-002	7/8" Saddle Cap Washer	8	a	47691-000L	ULTRA ROD	
27	04842-000	7/8"-14 UNF Saddle Cap Nut	8	b	64400-002L	ULTRA ROD PLUS	
28		Equalizing Beam Assembly, See Selection Guide 45745-147	2	c	66649-002L	XTRB	
	a	Fabricated Beam		51		Torque Rod Taper Bushing	2
	b	Cast Beam		a	64697-000H	ULTRA ROD	
29		Cross Tube – Dia. 27/16", see chart on Page 8	1	b	64400-004L	ULTRA ROD PLUS	
	44643-07622-	RT/RTE 480/503 RT/RTE 520/523		c	66649-004L	XTRB	
30		**Rubber Center Bushing, Requires Transverse Rods	2		42518-045	***Transverse Rod Assembly Service Kit, Axle Set, Includes Key Nos. 49b, 52-53, 54b, and 5/8" Fasteners	
	29483-005L	RT/RTE 480-523		52	22186-000	Torque Rod Frame Bracket	2
	34013-097L	RT/RTE 480-523 w/ Loose End Plug		53		Backup Plate	As Req.
31	30437-000L	Bronze Center Bushing Service Kit, Two Beams Includes Key Nos. 32-36			45045-001	1/8" Thickness	
32	30240-002	**Bronze Center Bushing	2		45045-002	1/4" Thickness	
33	14685-000	Beam Center Sleeve	2		45045-003	3/8" Thickness	
34	30334-000	Beam Center Seal	4	54 a		*****Transverse Rod Axle Bracket	2
				b	46868-000	Transverse Rod Axle Bracket, Rockwell - SL100, SQ100, SQHP	2
				Not Shown	70867-001	P-80 Lubricant - 10 ml.	per Bushing 1





KEY NO.	PART NO.	DESCRIPTION	NO.REQ.	KEY NO.	PART NO.	DESCRIPTION	NO.REQ.
1	a,b	Hanger #1, Forward Spring Hanger See Selection Guide 45745-038	2	23	45374-000	Bronze Center Bushing Service Kit, Two Beams Includes Key Nos. 24-28	
2	a,b	Hanger #2, Rear Spring Hanger See Selection Guide 45745-038	2	24	30240-005	**Bronze Center Bushing	2
3		Pin 1 1/2" Diameter		25	25102-000	Beam Center Sleeve	2
	a	45797-000 Double Lock	2	26	31577-000	Beam Center Seal	4
	b	00005-000 Drawkey Lock	4	27	45261-000	Thrust Washer	4
4		Forward Hanger Service Kit		28	30087-000	Lube Fitting	2
	a	46825-001 Lock Bolt Assembly with Fasteners	2	29		Rubber End Bushing and Adapter Service Kit, Tandem Set	
	b	00081-001 Drawkey Assembly with Fasteners	4		60872-010 for 6" Bushing, Includes Key No. 30a, 31a		
5	33117-000	Lube Fitting	As Req.		60872-011 for 7" Bushing, Includes Key No. 30b, 31b		
6		Spring Eye Bushing	2		Rubber End Bushing and Adapter Service Kit, One Wheel End		
	22285-000	Bronze 1 1/2" I.D.			34013-052 for 6" Bushing, Includes Key No. 30a, 31a		
	50592-000	Steel Bushing 1 1/2" I.D.			34013-110 for 7" Bushing, Includes Key No. 30b, 31b		
	29828-033	Rebound Bolt & Spacer Service Kit, One Hanger, Includes Key Nos. 7-9			34013-072 Rubber End Bushing and Tube/Nut Service Kit, One Wheel End, Includes Key No. 30a, 32		
7	02276-000	Rebound Bolt Spacer	4	30		Rubber End Bushing	4
8	21867-023	3/4"-16 UNF Bolt, 6.5" Length	4	a	10363-000L	6" Length	
9	30191-000	3/4"-16 UNF Locknut	4	b	10364-000	7" Length	
10	00003-000	Pin Roller – Key No. 2b Hanger	2	31		Adapter Service Kit, One Wheel End, (Bushing not included)	
11	19199-000	Top Pad (Casting No. 35431 or 48491) <i>Replaces 45112-000</i>	2	a	21140-007 for 6" Bushing		
12	19201-002	Internal Hex Head Set Screw	4		21140-027 for Center Tube and 6" Bushing		
13	30550-	Bolt, Specify Length - Dim. 'A' See chart on page 8	8		21140-031 for Chamfered Nut and 6" Bushing		
14	22962-006	Washer	24	b	21140-004 for 7" Bushing		
15		Spring Assembly, Includes Key No. 6	2		21140-026 for Center Tube and 7" Bushing		
	27535-000	Spring Rate 27,300			21140-043 for Hex Nut and 7" Bushing		
	02056-000	Spring Rate 29,400 (Bronze Bushing)		32	21140-006	Threaded Tube/Nut Service Kit, One Wheel End Includes Key Nos. 33-35	
	58596-000	Spring Rate 29,400 (Steel Eye Bushing)		33	10371-000	Threaded Nut	8
	57961-000	Spring Rate 44,400		34	10372-000	Beam Hanger Tube	4
16	66662-001	Center Bolt, Cut to Length, <i>Replaces 05069-000</i>	2	35	17800-010	Cotter Pin	16
17		Saddle Assembly, Specify Height-Dim. 'B' Includes Key Nos. 14, 19-20	2	36	10397-XXX	Cross Tube, See chart on page 8	4
	31017-004	7 1/8" Ht. (Casting No. 15784, 46895 or 48497)		37	72100-XXX	***ULTRA ROD® PLUS™ Longitudinal Torque Rod Assembly, Specify Length in mm	2
	31017-071	9 3/8" Ht. (Casting No. 15784 or 46673-001)		38	72800-XXX	****ULTRA ROD PLUS Transverse Torque Rod Assembly, Specify Length in mm	2
	31017-070	10 1/8" Ht. (Casting No. 15784 or 46673-002)		39	46015-000	Torque Rod Frame Bracket	4
	31017-069	11 1/8" Ht. (Casting No. 15784 or 46673-002)		40	64400-003	Torque Rod Bushing, Straddle	
18	15785-000	Saddle Cap	4	41	64400-006	Torque Rod Bushing, Taper	2
19	10948-000	1"-14 UNS Saddle Cap Stud	8	42	46869-005	Backing Plate	4
20	08017-000	1"-14 UNS Locknut	16	43		***** Transverse Torque Rod Axle Bracket	2
21		Equalizing Beam Assembly See Selection Guide 45745-147	2	Not Shown	70867-001	P-80 Lubricant - 10 ml.	per Bushing 1
22	10366-000L	**Rubber Center Bushing	2				



■ Selection Guide

CROSS TUBE								TOP PAD BOLT	
RT/RTE 340		RT/RTE 343/400/403/ 460/463/480/503		RT/RTE 520/523		RT 650/700		1" 14 UNS-2A	
Length	Part Number	Length	Part Number	Length	Part Number	Length	Part Number	Length	Part Number
33 ⁷ / ₈ "	44642-020	33 ⁷ / ₈ "	44643-027	46"	07622-003	34 ³ / ₄ "	10397-015	8 ¹ / ₄ "	30550-018
36 ¹ / ₂ "	44642-022	40 ³ / ₄ "	44643-011	53"	07622-018	40"	10397-018	8 ¹ / ₂ "	30550-019
42"	44642-009	42"	44643-008	64"	07622-031	40 ³ / ₄ "	10397-014	8 ³ / ₄ "	30550-001
43 ⁷ / ₈ "	44642-008	44 ⁷ / ₈ "	44643-009	68"	07622-014	41"	10397-019	9"	30550-002
44 ⁷ / ₈ "	44642-008	46"	44643-003			41 ³ / ₄ "	10397-009	9 ¹ / ₄ "	30550-003
		47"	44643-002			42"	10397-001	9 ¹ / ₂ "	30550-004
		48"	44643-001			42 ¹ / ₂ "	10397-021	9 ³ / ₄ "	30550-005
		49 ¹ / ₄ "	44643-024			43 ¹ / ₄ "	10397-017	10"	30550-006
		51"	44643-015			44 ³ / ₄ "	10397-002	10 ¹ / ₄ "	30550-007
		53"	44643-018			46"	10397-010	10 ¹ / ₂ "	30550-008
		54 ¹ / ₂ "	44643-017			46 ¹ / ₂ "	10397-020	10 ³ / ₄ "	30550-009
		57"	44643-010			47 ¹ / ₂ "	10397-027	11"	30550-010
		64"	44643-028			50"	10397-013	11 ¹ / ₄ "	30550-011
		68"	44643-014			51 ¹ / ₄ "	10397-003	11 ¹ / ₂ "	30550-012
		77"	44643-029			52 ³ / ₄ "	10397-006	11 ³ / ₄ "	30550-013
		127"	44643-030			54"	10397-025	12"	30550-014
						56 ¹ / ₂ "	10397-016	16 ⁵ / ₈ "	30550-028
						61 ¹ / ₄ "	10397-008		
						62 ³ / ₄ "	10397-031		
						67 ¹ / ₂ "	10397-004		
						75 ³ / ₄ "	10397-029		

- NOTES:**
- * Item included in assembly only, part not sold separately.
 - ** Hendrickson recommends the use of OTC installation tools for bushing replacement.
 - *** Hendrickson's part number is stamped on the torque rod for identification. Be sure to include the suffix number when ordering, this number indicates rod length. Hendrickson's two-piece ULTRA ROD can be used to create the desired length, see Hendrickson Lit. No. 45745-148.
 - **** Transverse torque rods are required in all refuse, mining, and logging applications, for capacities of 44,000 to 52,000 lbs., 70,000 lbs. and with equalizing beam lengths of 60" and longer, refer to Hendrickson Lit. No. 59310-004 transverse torque rod requirement.
 - ***** Not supplied by Hendrickson, used for reference only, refer to vehicle manufacturer for more information. Hendrickson is not responsible for components supplied by vehicle manufacturer.

This is a general parts list to provide directional information. Components may vary by model. Questions in regards to parts, contact Hendrickson Truck Parts at 1.866.755.5968 (Toll-free U.S. and Canada), 630.910.2800 (Outside U.S. and Canada) or e-mail: truckparts@hendrickson-intl.com.

www.hendrickson-intl.com



Truck Commercial Vehicle Systems
800 South Frontage Road
Woodridge, IL 60517-4904 USA

1.866.755.5968 (Toll-free U.S. and Canada)
630.910.2800 (Outside U.S. and Canada)
Fax 630.910.2899