

# **H** PARTS LIST

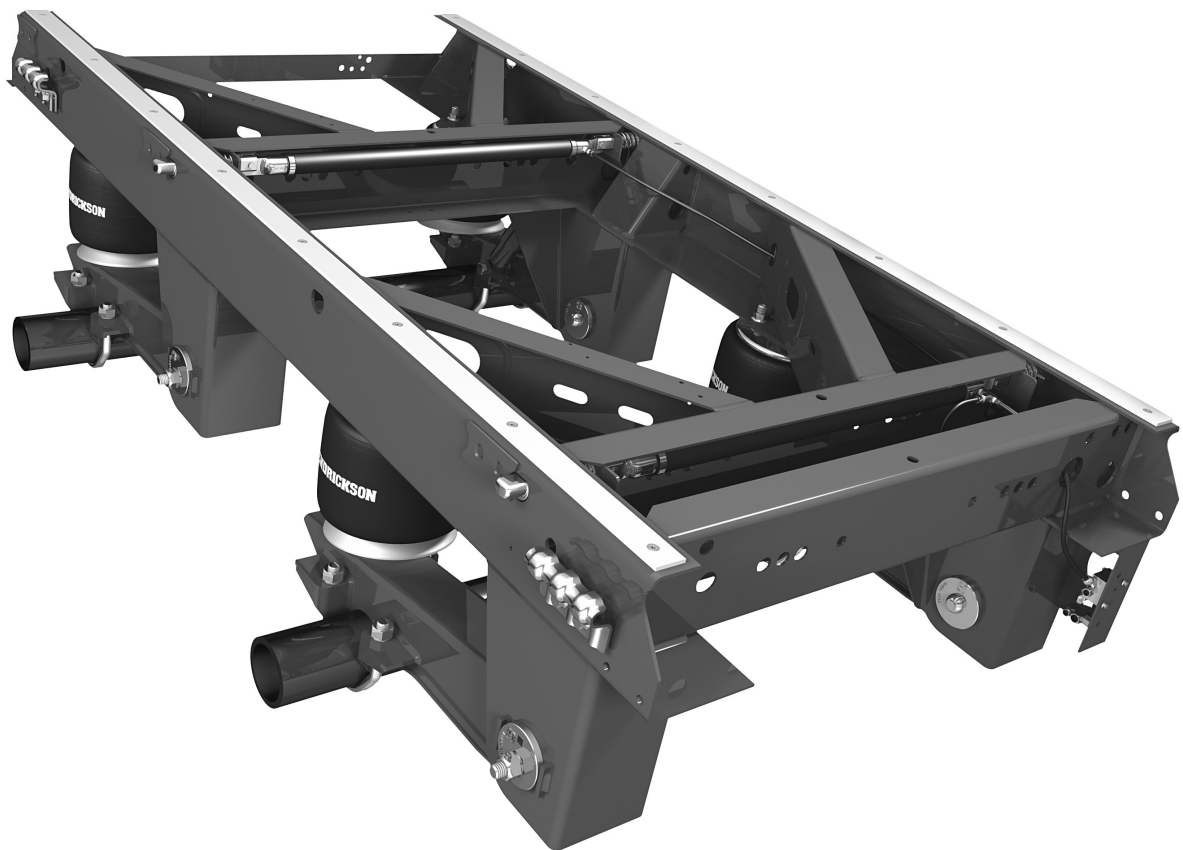
HK190 / 230 (K-2® SLIDER  
WITH HT SUSPENSIONS)

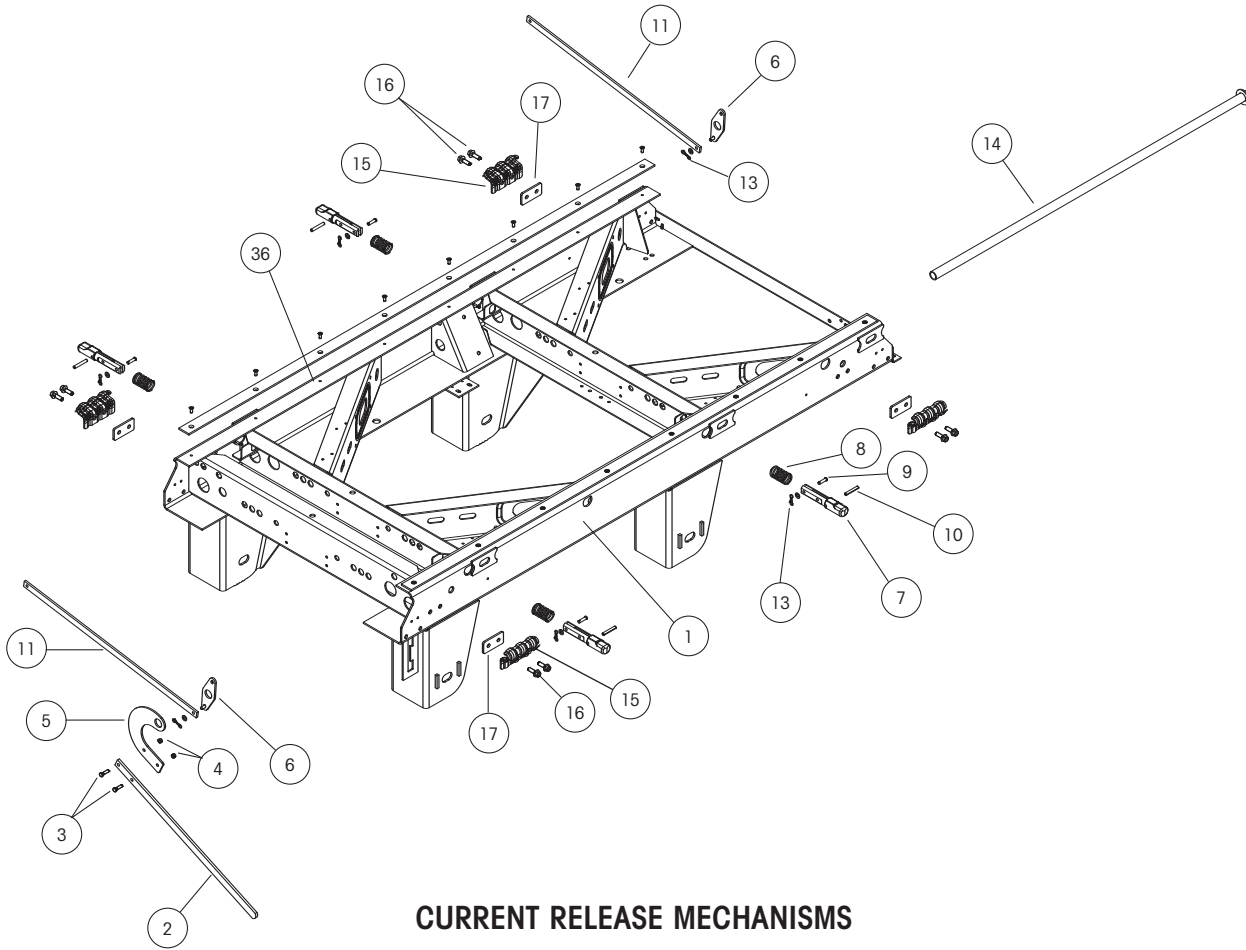
LIT NO: L536

DATE: September 2011

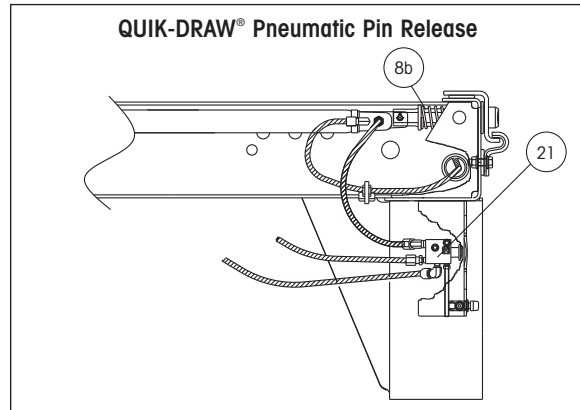
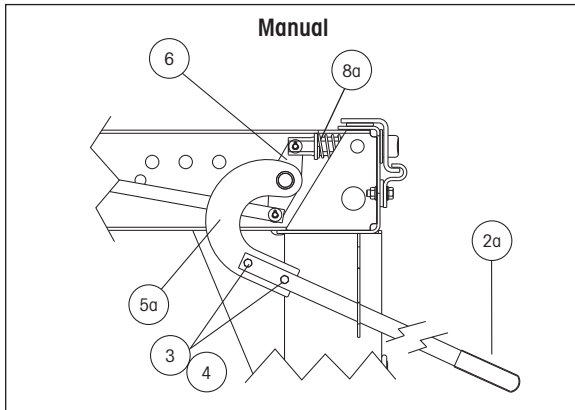
REVISION: D

---

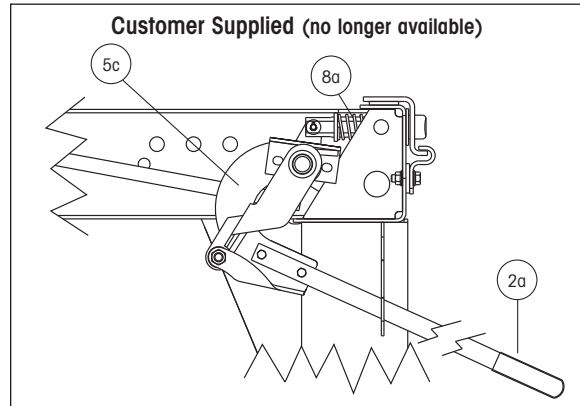
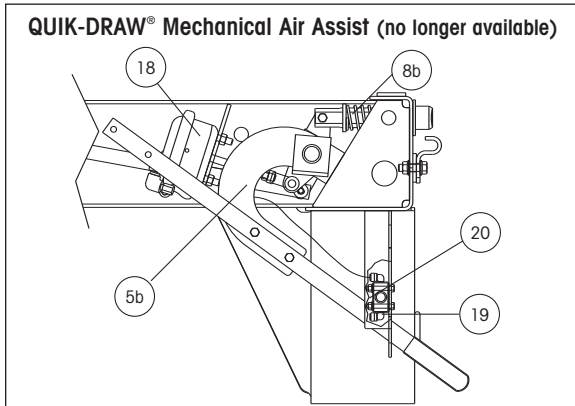




**CURRENT RELEASE MECHANISMS**



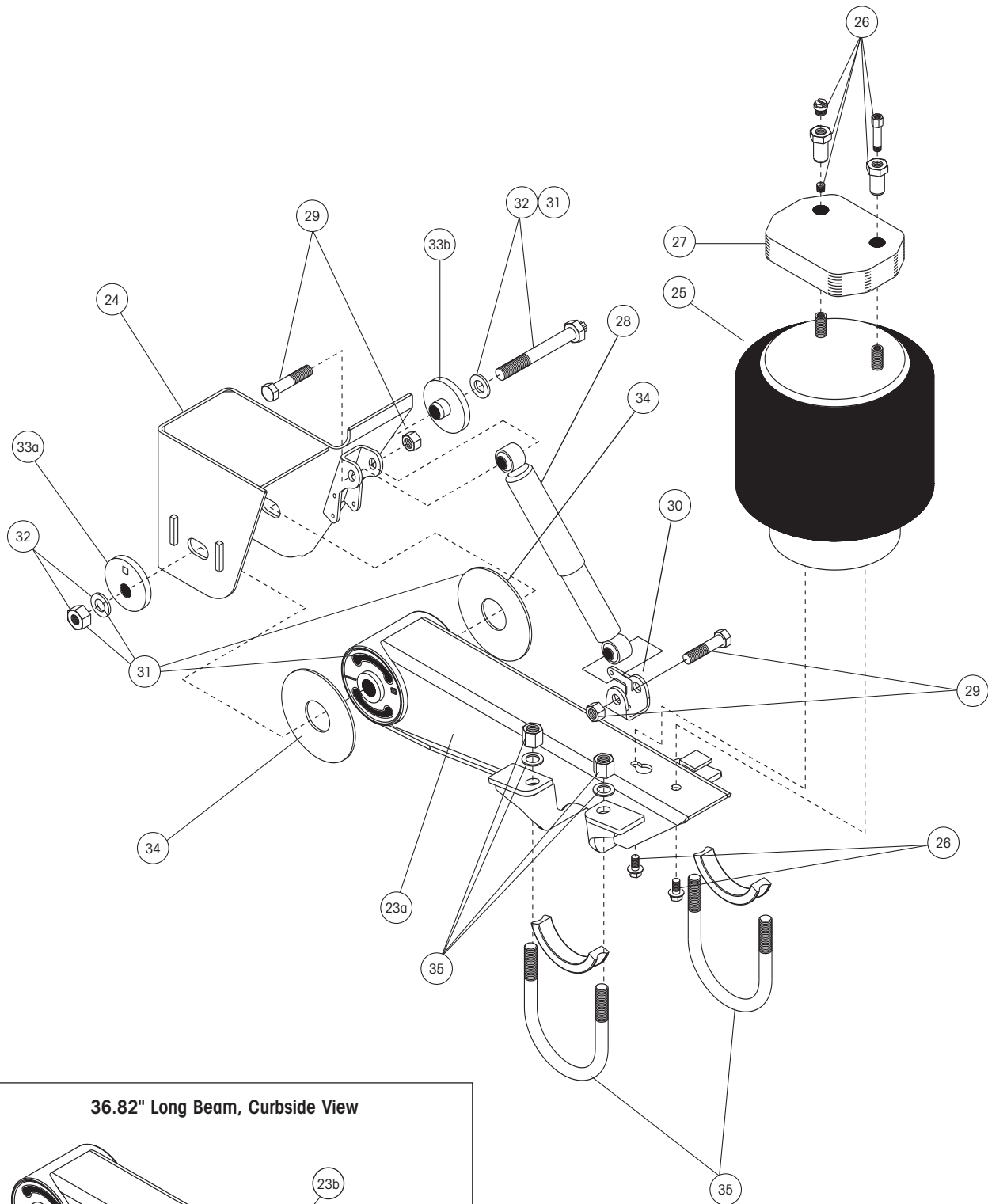
**NO LONGER AVAILABLE ON PRODUCTION MODELS OR BOX REPLACEMENTS.  
PARTS FOR THESE MECHANISMS ARE STILL AVAILABLE.**



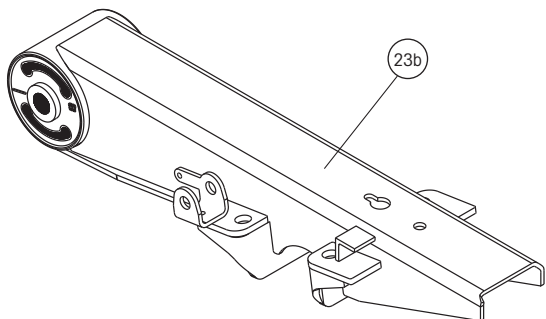


# HK190T / 230 SLIDER BOX COMPONENTS

ITEM	DESCRIPTION	PART NO.	SYSTEM QTY.	NOTE
1	AFTERMARKET BOX REPLACEMENT	AMBOX.###	1	Please contact Hendrickson for assistance
2	HANDLE			
2a	Manual and Customer Supplied	S-25592	1	Handle and grip assembly
3	HANDLE BOLT	SA-1100-10	2	3/8"-16 x 1 1/4" hex head bolt, grade 5
4	HANDLE NUT	SA-9000-5	2	3/8"-16 lock nut, grade B
5	HANDLE MOUNT			
5a	Manual	C-21275	1	
5b	QUIK-DRAW® Mechanical air assist	C-23231	1	
5c	Customer Supplied	C-23530		
6	CRANK ARM WELDMENT	B-23149	2	
7	LOCKING PIN			
7a	1 3/8" Diameter Pin	S-28290	4	6" Body rail hole spacing
7b	1 5/8" Diameter Pin	S-28289	4	4" Body rail hole spacing
8	LOCKING PIN SPRING			
8a	Manual and Customer Supplied	B-28930	4	
8b	QUIK-DRAW	B-22000	4	Length and spring tension differ from above
9	CLEVIS PIN	SA-5200-6	4	3/8" x 1 3/8"
10	SPRING PIN	SA-8100-4	4	3/8" x 2 1/2" roll pin
11	LOCKING PIN LINK			
11a	42" Box	S-23150-1	2	
11b	48" Box	S-23150-2	2	
12	LOCKING PIN WASHER (not shown)	SA-1500-2	6	3/8" I.D. flat washer
13	LOCKING PIN LINK COTTER PIN	SA-1700-12	6	3/32" x 1" cotter pin
14	PIPE WELDMENT			
14a	Manual and Customer Supplied	S-21433	1	
14b	QUIK-DRAW (chamber actuated)	S-21433-1	1	
15	BODY RAIL CLIP			
15a	3.4" clip height	S-24459	4	Use with 4" hole centers and 1.625" locking pin
15b	3.8" clip height	S-24460	4	Use with 6" hole centers and 1.375" locking pin
15c	Universal 2" Spacer - 4" or 6" height	S-22366	4	Hole centers measure 2"
16	BODY RAIL BOLT	SA-6900-2	8	1/2"-13 x 1 1/2" flanged bolt, grade 8
17	BODY RAIL CLIP SPACER	A-22367	4	Hole centers measure 2"
18	AIR ACTUATOR CHAMBER (not shown)	A-23039	1	Type 12 modified
19	AIR VALVE	VS-23224	1	Air valve with fittings
20	VALVE CAP	A-22977	1	
21	QUIK-DRAW II VALVE	VS-25224		3-way auto reset valve with fittings
		VS-25223		3-way auto reset valve without fittings
22	VALVE KNOB KIT (not shown)	VS-25849		For old style valve with plastic knob



36.82" Long Beam, Curbside View





# HK190T / 230 SUSPENSION COMPONENTS

ITEM	DESCRIPTION	PART NO.	SYSTEM QTY.	NOTE
<b>23</b>	<b>BEAM ASSEMBLY<sup>1</sup></b>			
	<b>23a</b> Front or Rear, Overall length is 32.65"			
	Roadside	S-20000-1		
	Curbside	S-20000-2		
	<b>23b</b> Rear, Overall length is 36.82" (For units with SURELOK®)			
	Roadside	S-21736-1		
	Curbside	S-21736-2		
<b>24</b>	<b>FRAME BRACKET</b>			Contact Hendrickson for assistance
	<b>24a</b> 16" Ride Height			
	Roadside	D-21291-1	2	
	Curbside	D-21291-2	2	
	<b>24b</b> 16.5" Ride Height			
	Roadside	D-22386-1	2	
	Curbside	D-22386-2	2	
	<b>24c</b> 17" Ride Height			
	Roadside	D-21497-1	2	
	Curbside	D-21497-2	2	
	<b>24d</b> 18" Ride Height			
	Roadside	D-21802-1	2	
	Curbside	D-21802-2	2	
	<b>24e</b> 19" Ride Height			
	Roadside	D-21803-1	2	
	Curbside	D-21803-1	2	
<b>25</b>	<b>AIR SPRING</b>			
	<b>25a</b> HK190T Sliders	S-22045	4	
	<b>25b</b> HK230 Sliders	S-22046	4	
<b>26</b>	<b>AIR SPRING MOUNTING KITS</b>			
	<b>26a</b> 16" Ride Height / No Spacer (Per Air Spring)	S-22907/2	4	Includes (1) 1/4"-18 NPFT plug, (2) 1/2"-13 flanged screw and (2) 3/4"-16 flanged nut,
	<b>26b</b> 16 1/2" and 17" Ride Height / 3/4" Thick Spacer (Per Air Spring)	S-22908/2	4	Includes (1) 1/4"-18 NPFT plug, (2) extension nuts, .65" and (2) 1/2"-13 flanged screw
	<b>26c</b> 18" Ride Height / 1 7/8" Thick Spacer (Per Air Spring)	S-22909/2	4	Includes (1) 1/4"-18 NPFT plug, (1) air fitting, 2.10", (2) extension nuts, 1.73", (2) 1/2"-13 flanged screw and (1) plug
	<b>26d</b> 19" Ride Height / 3 1/8" Thick Spacer (Per Air Spring)	S-22910/2	4	Includes (1) 1/4"-18 NPFT plug, (1) air fitting, 3.10", (2) extension nuts, 2.65", (2) 1/2"-13 flanged screw and (1) plug
<b>27</b>	<b>AIR SPRING SPACER</b>			
	<b>27a</b> 3/4" Thick Spacer	B-22510-4	4	16 1/2" and 17" ride height
	<b>27b</b> 1 7/8" Thick Spacer	B-22510-2	4	18" ride height
	<b>27c</b> 3 1/8" Thick Spacer	B-22510-3	4	19" ride height
<b>28</b>	<b>SHOCK ABSORBER</b>	S-21292	4	
<b>29</b>	<b>SHOCK ABSORBER BOLT KIT</b>	S-20031/2	4	
<b>30</b>	<b>LOWER SHOCK CLEVIS</b>	S-20069	4	
<b>31</b>	<b>TRI-FUNCTIONAL® BUSHING KIT<sup>2</sup></b>	S-24691	4	Includes bushing, pivot bolt kit, wear pads and lube

<sup>1</sup>Measure beam assembly before ordering. Some models have 32.65" beam assemblies for both the front and rear; others have 32.65" beam assemblies on the front and 36.82" beam assemblies on the rear. Units with 36.82" beam assemblies on the rear are designed to accommodate SURELOK®. Units with the 32.65" beam assemblies on the rear require the addition of a weld-on beam extension to accommodate SURELOK®.

<sup>2</sup>Bushing tool S-21307 is required to properly re-bush the suspension.

# HK190T / 230 SUSPENSION COMPONENTS



ITEM	DESCRIPTION	PART NO.	QTY.	NOTE
32	<b>QUIK-ALIGN® Pivot Bolt Kit (Per Hanger)</b>	S-24679	4	Includes (1) 10" shear type bolt, (1) torque heavy hex nut and (2) hardened steel washers
<b>33</b>	<b>ALIGNMENT COLLARS</b>			
	<b>33a</b> Eccentric (Outer)	S-20925	4	Pivot bolt hole is offset from center of collar
	<b>33b</b> Concentric (Inner)	S-20924	4	Pivot bolt hole is in center of collar
34	<b>BUSHING TUBE SPACERS</b>	S-21099	8	
35	<b>U-BOLT KIT</b>	S-21140		Order S-21140/4 for a single U-Bolt, nut and washer
	<b>35a</b> U-Bolt, Cornered Radius		4	
	<b>35b</b> 7/8"-14 Hex Nut, Grade 8		8	
	<b>35c</b> 7/8" Flat Washer		8	
36	<b>SLIDER WEAR PAD KIT</b>	S-14342-3	2	Includes (1) slider wear pad and (8) screws



---

[www.hendrickson-intl.com](http://www.hendrickson-intl.com)



Trailer Commercial Vehicle Systems  
250 Chrysler Drive, Unit #3  
Brampton, ON Canada L6S 6B6  
905.789.1030  
Fax 905.789.1033

Trailer Commercial Vehicle Systems  
2070 Industrial Place SE  
Canton, OH 44707-2641 USA

866.RIDEAIR (743.3247)  
330.489.0045  
Fax 800.696.4416

Hendrickson Mexicana  
Av. Industria Automotriz #200  
Parque Industrial Siiva Aeropuerto  
Apodaca, N.L., México C.P. 66600  
+52 (81) 8288.1300  
Fax +52 (81) 8288.1301