

# H PARTS LIST

## R™ Series

LIT NO: SP-167

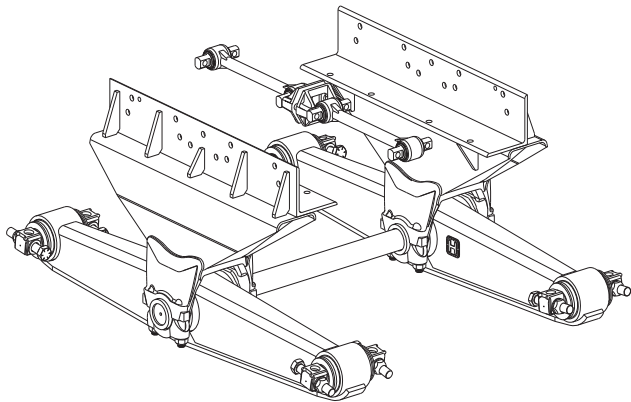
DATE: March 2012

REVISION: B

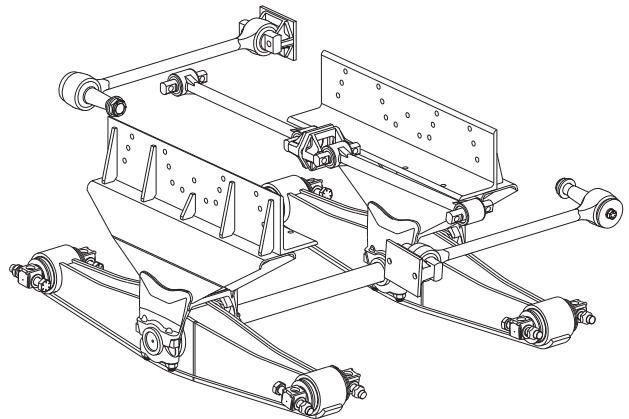
### CONTENTS

DESCRIPTION	PAGE	DESCRIPTION	PAGE
R 400/403/460/463 .....	2	Selection Guides	
R 480/503/520/523 .....	4	■ Saddle Assembly - R 650 .....	7
R 650 .....	6	■ Torque Rod Assembly - R 850/1000/1200 .....	9
R 850/1000/1200 .....	8	■ Cross Tube .....	10

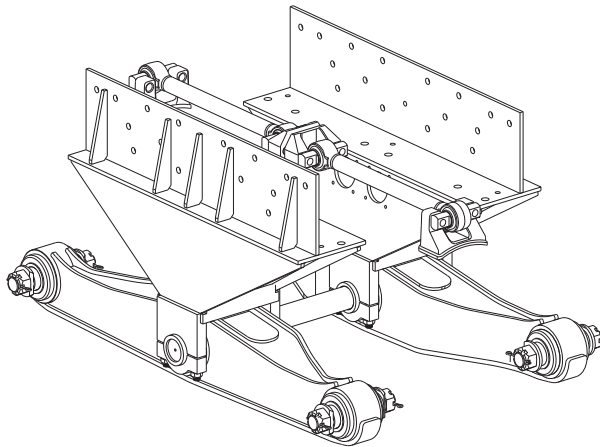
### R 400/403/460/463



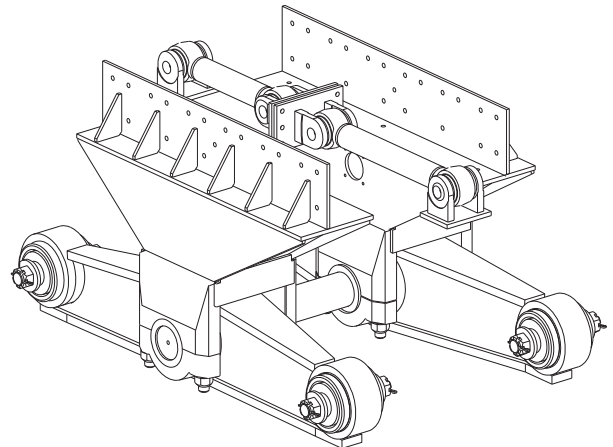
### R 480/503/520/523

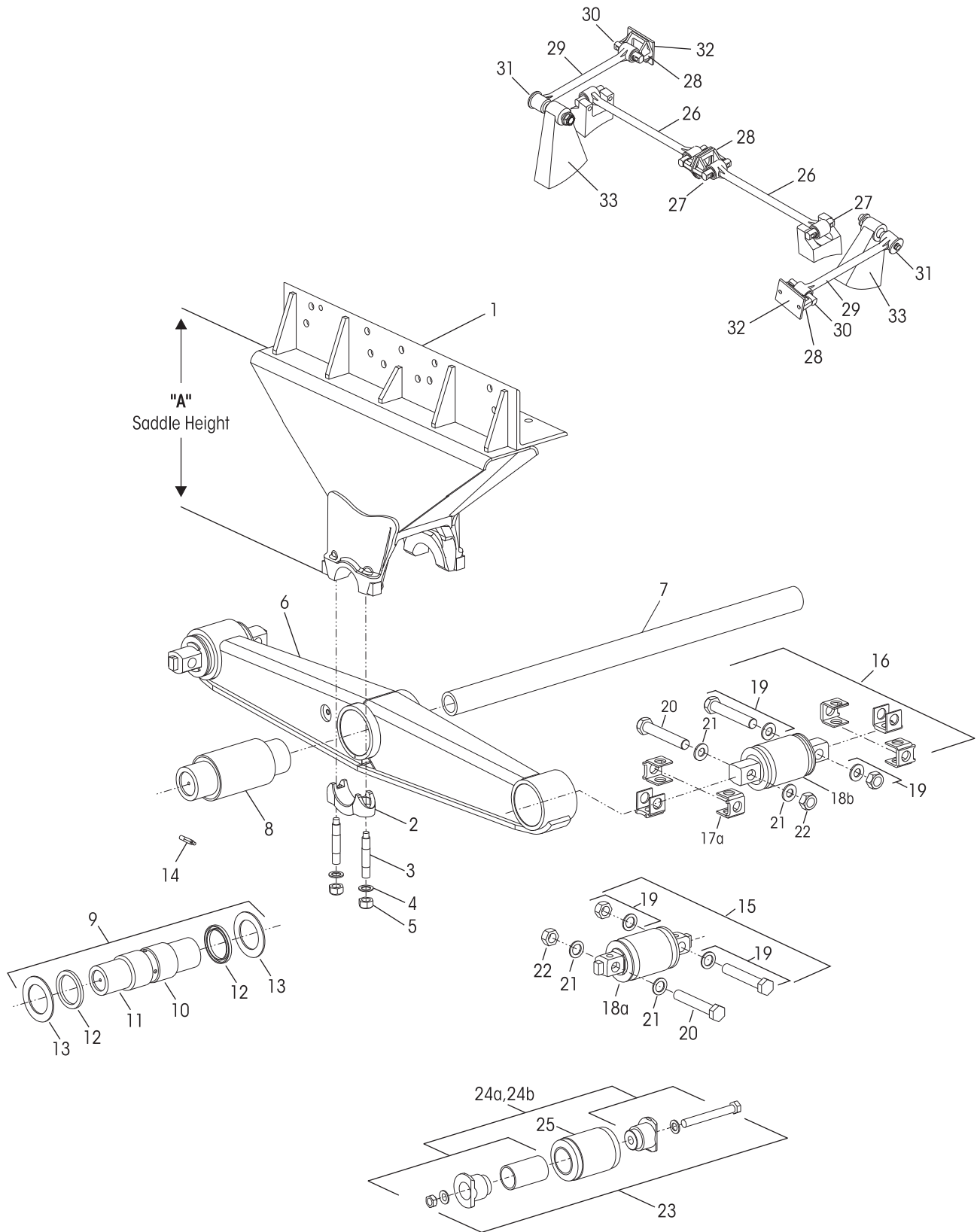


### R 650



### R 850/1000/1200







KEY NO.	PART NO.	DESCRIPTION	NO.REQ.	KEY NO.	PART NO.	DESCRIPTION	NO.REQ.
1		Saddle Assembly - Specify Height, Dim. 'A', Includes Key Nos. 2-5	2	17a	50130-000	Shim - 0.19"/0.19"	8
	49197- 50207-	R 400/460 R 400/403/460/463		b	50131-000	Shim - 0.25"/0.12" (as required)	
2	58795-000	Saddle Cap	4	18		*Bar Pin End Bushing	4
3	06696-000	7/8"-14 UNF Saddle Cap Stud	8	a		**Non-Shim Type	
4	22962-002	7/8" Hardened Washer	8	b		**Shim Type	
5	04842-000	7/8"-14 UNF Saddle Cap Locknut	8	c		**Rotating, Shim Type (Not Shown)	
6		Equalizing Beam Assembly See Selection Guide 45745-147	2	19	34013-104	<b>Bar Pin End Bushing Fastener Kit, One Wheel End</b> , Includes Key Nos. 20-22	
7	44643-	Cross Tube, See chart on page 10	1	20		*1"-8 UNC Hex Bolt	2
8		**Rubber Center Bushing	2	21		*1" Hardened Washer	4
	49400-000L	R 400/403		22		*1"-8 UNC Locknut	2
	49600-000L	R 400/403 w/ Loose End Plug		23		<b>End Bushing and Adapter Kit, One Wheel End</b> , Includes Key Nos. 24a, 25	
	29483-005L	R 460/463 Optional for R 400/403 Requires Transverse Rods			34013-049L 34013-073L	R 460/463, Includes Key Nos. 24b, 25	
	34013-097L	w/ Loose End Plug, Optional for R 400/403 Requires Transverse Rods		24		<b>End Bushing Adapter Kit, One Wheel End</b>	
9	30437-000L	<b>Bronze Center Bushing Kit, Two Beams</b> , Includes Key Nos. 10-14		a	45000-007L	R 400/403	
10	30240-002	**Bronze Center Bushing	2	b	21140-034L	R 460/463	
11	14685-000L	Beam Center Sleeve	2	25	45900-000L	**End Bushing	4
12	30334-000	Beam Center Seal	4	26	60218-000	<b>**ULTRA ROD® Two-Piece Longitudinal Torque Rod Kit</b> , Straddle/Straddle Assembly, Includes Tube End and Spacer End	
13	32365-000	Thrust Washer	8	27	47691-000H	Torque Rod Straddle Bushing	4
14		Lube Fitting	2	28	22186-000	Torque Rod Frame Bracket	4
	30087-000	w/ Forged Beam		29	65781-000	<b>****ULTRA ROD® PLUS™ Two-Piece Transverse Rod Kit</b> , Straddle/Taper Assembly, Includes Tube End, Spacer End and Key Nos. 30-31	
	58758-001	w/ Fab Beam		30	64400-002L	Torque Rod Straddle Bushing	2
		<b>Bar Pin End Bushing Kit, One Wheel End</b>		31	64400-004L	Torque Rod Taper Bushing	2
15	34013-087L	Non-Shim Type, Includes Key No. 18a, 19		32	45045-003	Backup Plate	As Req.
16	34013-088L	Shim Type, Includes Key Nos. 17a, 18b, 19		33		*****Transverse Rod Axle Bracket	2
Not Shown	34013-188L	Rotating Shim Type, Includes Key Nos. 17a, 18c, 19					

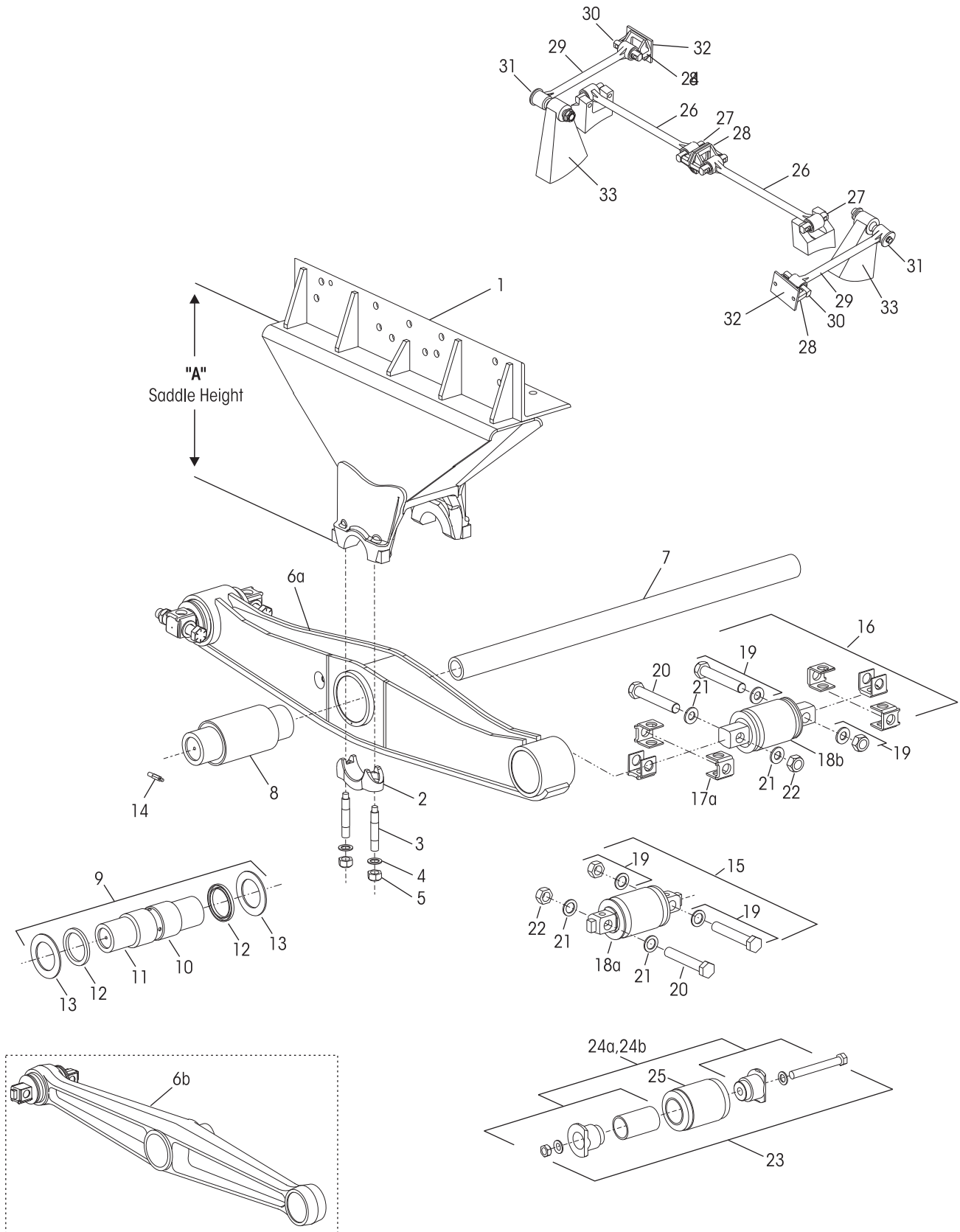
**NOTE:** \* Item included in assembly only, part not sold separately.

\*\* Hendrickson recommends the use of OTC installation tools for bushing replacement.

\*\*\* Hendrickson's part number is stamped on the torque rod for identification. Be sure to include the suffix number when ordering, this number indicates rod length. Hendrickson's two-piece ULTRA ROD can be used to create the desired length, see literature number 45745-148.

\*\*\*\* See Lit. No. 59310-004 for mandatory use of transverse rods. Transverse Rods are mandatory for all walking beam series suspensions with capacities of 44,000 lbs. through 52,000 lbs. when using rubber equalizing beam center bushings, regardless of axle spacing.

\*\*\*\*\* Not supplied by Hendrickson, used for reference only. Refer to vehicle manufacturer for more information. Hendrickson is not responsible for components supplied by vehicle manufacturer.





KEY NO.	PART NO.	DESCRIPTION	NO.REQ.	KEY NO.	PART NO.	DESCRIPTION	NO.REQ.
1	50210-000	Saddle Assembly - Specify Height, Dim. 'A' Includes Key Nos. 2-5	2	19	34013-104	<b>Bar Pin End Bushing Fastener Kit, One Wheel End</b> , Includes Key Nos. 20-22	
2	58795-000	Saddle Cap	4	20		*1"-8 UNC Hex Bolt	2
3	06696-000	7/8"-14 UNF Stud	8	21		*1" Hardened Washer	4
4	22962-002	7/8" Hardened Washer	8	22		*1"-8 UNC Locknut	2
5	04842-000	7/8"-14 UNF Locknut	8	23		<b>End Bushing and Adapter Kit, One Wheel End</b> ,	
6		Equalizing Beam Assembly, See Selection Guide 45745-147	2		34013-050L	R 480/503, Includes Key Nos. 24a, 25	
a		Fabricated Beam			34013-051L	R 520/523, Includes Key Nos. 24b, 25	
b		Cast Beam		24		<b>End Bushing Adapter Kit, One Wheel End</b> ,	
7		Cross Tube, See chart on page 10	1	a	21140-034L	R 480/503/520/523, For 5.75" Length Bushing	
	44643-	R 480/503, Specify Length		b	21140-033L	R 520/523, For 6.0" Length Bushing	
	07622-	R 520/523, Specify Length		25		**End Bushing	4
8		**Rubber Center Bushing	2		29878-001L	R 480/503, 5.75" Length	
	29483-005L	Requires Transverse Rods			45407-000L	R 520/523, 6.0" Length	
	34013-097L	w/ Loose End Plug, Requires Transverse Rods		26		***ULTRA ROD® PLUS™ Longitudinal	
9	30437-000L	<b>Bronze Center Bushing Kit, Two Beams</b> , Includes Key Nos. 10-14			46610-001	Torque Rod, Straddle/Straddle Assembly,	2
10	30240-002	**Bronze Center Bushing	2		46661-001	Tube End, Includes Key No. 27	2
11	14685-000L	Beam Center Sleeve	2	27	64400-002L	Torque Rod Straddle Bushing	4
12	30334-000	Beam Center Seal	4	28	22186-000	Torque Rod Frame Bracket	4
13	32365-000	Thrust Washer	8		42518-045	<b>Transverse Rod Assembly Service Kit</b> ,	
14	30087-000	Lube Fitting w/ Forged Beam	2			<b>Axle Set</b> , Includes Key Nos. 29, 32, 33b and 7/8" Fasteners	
	58758-001	Lube Fitting w/ Fab Beam		29	65781-000	****ULTRA ROD PLUS Two-Piece Transverse	
		<b>Bar Pin End Bushing Kit, One Wheel End</b> , Includes Fasteners				<b>Rod Kit</b> , Straddle/Taper Assembly, Includes Tube End, Spacer End and Key Nos. 30-31	
15	34013-087L	Non-Shim Type, Includes Key No. 18a, 19		30	64400-002L	Torque Rod Straddle Bushing	2
16	34013-088L	Shim Type, Includes Key Nos. 17a, 18b, 19		31	64400-004L	Torque Rod Taper Bushing	2
Not Shown	34013-188L	Rotating Shim Type, Includes Key Nos. 17a, 18c, 19		32		Backup Plate	As Req.
17a	50130-000	Shim - 0.19"/0.19"	8		45045-001	1/8" Thickness	
b	50131-000	Shim - 0.25"/0.12" (as required)			45045-002	1/4" Thickness	
18		*Bar Pin End Bushing	4		45045-003	3/8" Thickness	
a		**Non-Shim Type		33 a		*****Transverse Rod Axle Bracket	2
b		**Shim Type		b	46868-000	Transverse Rod Axle Bracket, Rockwell - SL100, SQ100, SQHP	2
c		**Rotating, Shim Type (Not Shown)					

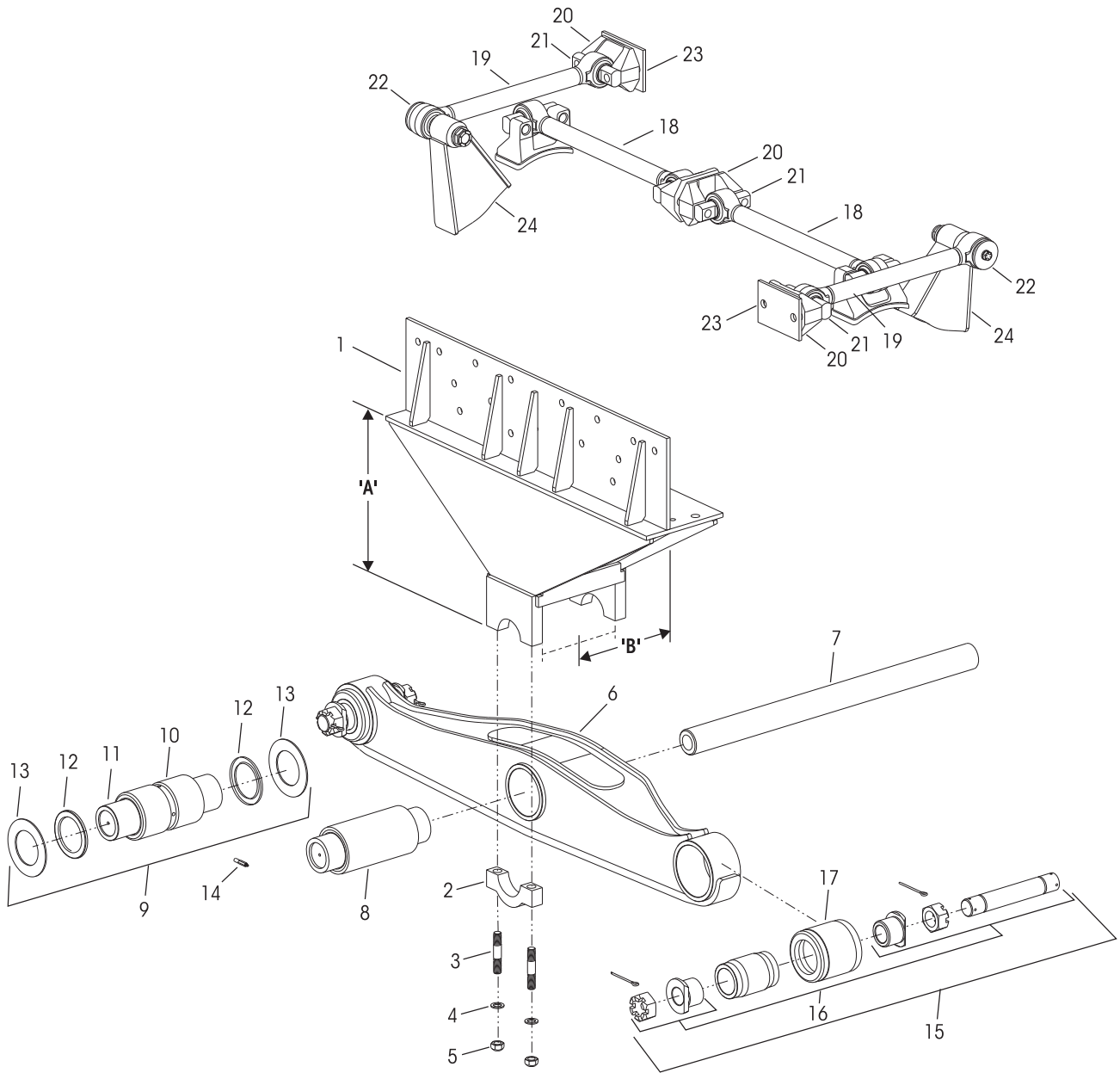
**NOTE:** \* Item included in assembly only, part not sold separately.

\*\* Hendrickson recommends the use of OTC installation tools for bushing replacement.

\*\*\* Hendrickson's part number is stamped on the torque rod for identification. Be sure to include the suffix number when ordering, this number indicates rod length. Hendrickson's two-piece ULTRA ROD can be used to create the desired length, see literature number 45745-148.

\*\*\*\* See Lit. No. 59310-004 for mandatory use of transverse rods. Transverse Rods are mandatory for all walking beam series suspensions with capacities of 44,000 lbs. through 52,000 lbs. when using rubber equalizing beam center bushings, regardless of axle spacing.

\*\*\*\*\* Not supplied by Hendrickson, used for reference only. Refer to vehicle manufacturer for more information. Hendrickson is not responsible for components supplied by vehicle manufacturer.





KEY NO.	PART NO.	DESCRIPTION	NO.REQ.	KEY NO.	PART NO.	DESCRIPTION	NO.REQ.
1	30950-	Saddle Assembly - Measure Dimension 'A' and 'B', See chart below, Includes Key Nos. 2-5	2	15		<b>Rubber End Bushing and Adapter Service Kit, Tandem Set</b>	
2	31205-005	Saddle Cap	4		34013-052	for 6" Bushing, Includes Key No. 16a, 17a	
3	06696-000	7/8"-14 UNF Stud	8		34013-110	for 7" Bushing, Includes Key No. 16b, 17b	
4	22962-002	7/8" Hardened Washer	8	16		<b>End Bushing Adapter Kit, One Wheel End</b>	
5	04842-000	7/8"-14 UNF Locknut	8	a	21140-007	6.0" Length	
6		Equalizing Beam Assembly See Selection Guide 45745-147	2	b	21140-004	7.0" Length	
7	10397-	Cross Tube, See chart on page 10	1	17		End Bushing	4
8	10366-000L	*Rubber Center Bushing	2	a	10363-000	6.0" Length	
9		<b>Bronze Center Bushing Kit,</b> Includes Key Nos. 10-14		b	10364-000	7.0" Length	
	45374-000	Two Beams		18	72100-	**ULTRA ROD® PLUS™ Longitudinal Torque Rod Assembly, Specify Length in mm.	2
	34013-055L	One Beam		19	72850-	***ULTRA ROD PLUS Transverse Torque Rod Assembly, Specify Length in mm.	2
10	30240-005	*Bronze Center Bushing	2	20	46015-000	Torque Rod Frame Bracket	4
11	25102-000	Beam Center Sleeve	2	21	64400-003	Torque Rod Bushing, Straddle	
12	31577-000	Beam Center Seal	4	22	64400-006	Torque Rod Bushing, Taper	2
13	45261-000	Thrust Washer	4	23	46869-005	Backing Plate	4
14	30087-000	Lube Fitting	2	24		****Transverse Torque Rod Axle Bracket	2

**NOTE:** \* Hendrickson recommends the use of OTC installation tools for bushing replacement.

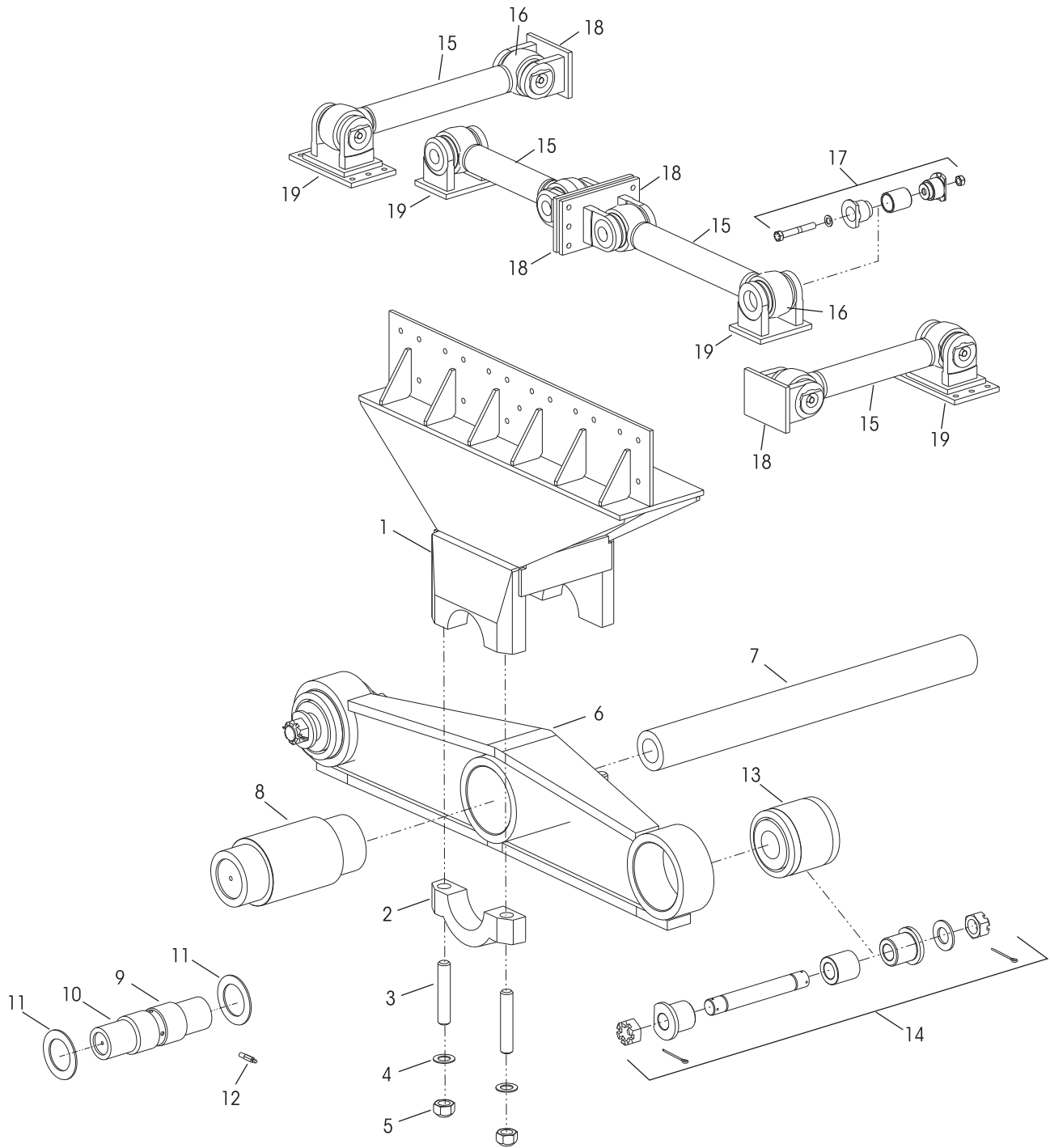
\*\* Hendrickson's part number is stamped on the torque rod for identification. Be sure to include the suffix number when ordering, this number indicates rod length. Hendrickson's two-piece ULTRA ROD can be used to create the desired length, see literature number 45745-148. See RS 850/1000/1200 for Heavy-duty torque rods.

\*\*\* See Lit. No. 59310-004 for mandatory use of transverse rods. Transverse Torque Rods are mandatory for all walking beam series suspensions with capacities of 44,000 lbs. through 52,000 lbs. when using rubber equalizing beam center bushings, regardless of axle spacing.

\*\*\*\* Not supplied by Hendrickson, used for reference only. Refer to vehicle manufacturer for more information. Hendrickson is not responsible for components supplied by vehicle manufacturer.

## ■ Saddle Assembly Selection Guide

Key No. 1		
SADDLE ASSEMBLY		
Measurement		Part No.
'A'	'B'	
18 <sup>5</sup> / <sub>16</sub> "	2"	30950-103
19"	2"	30950-047
19"	2 <sup>5</sup> / <sub>16</sub> "	30950-094
20 <sup>1</sup> / <sub>4</sub> "	1 <sup>1</sup> / <sub>4</sub> "	30950-080
20 <sup>1</sup> / <sub>4</sub> "	2 <sup>3</sup> / <sub>16</sub> "	30950-092
20 <sup>1</sup> / <sub>2</sub> "	1 <sup>7</sup> / <sub>8</sub> "	30950-088
20 <sup>7</sup> / <sub>16</sub> "	2"	30950-097
22 <sup>1</sup> / <sub>16</sub> "	2 <sup>3</sup> / <sub>16</sub> "	30950-081
23"	2 <sup>5</sup> / <sub>16</sub> "	30950-095







KEY NO.	PART NO.	DESCRIPTION	NO.REQ.	KEY NO.	PART NO.	DESCRIPTION	NO.REQ.
1	18750-001 49237-000	Saddle Lower Plate Assembly, Includes Key Nos. 2-5 R 850, cut to Length R 1000/1200	2	7	10397- 13504-	Cross Tube, See chart on page 10 R 850, Specify Length R 1000/1200, Specify Length	1
2	15785-000 47552-000	Saddle Cap R 850 R 1000/1200	4	8	15464-000 14110-000	*Rubber Center Bushing, One per Beam R 850 R 1000/1200	2
3	10948-000 13411-000	Saddle Cap Stud R 850 - 1"-14 UNS R 1000/1200 - 1½"-12 UNF	8	9	21113-000	Bronze Center Bushing **R 850 R 1000/1200	2
4	22962-006 22962-030	Hardened Washer R 850 - 1" R 1000/1200 - 1½"	8	10	47309-000	R 1000/1200 Beam Center Sleeve	2
5	08017-000 47042-000	Locknut R 850 - 1"-14 UNS R 1000/1200 - 1½"-12 UNF	8	11	21126-000	R 1000/1200 Thrust Washer	As reqd.
6	07500-104 07500-157 07500-604 07500-180 07500-297 07500-501 07500-068 07500-432 07500-359 07500-579 07500-615	Equalizing Beam Assembly Includes Key Nos. 8, 13, 14 R 850 - 56.0" Length R 850 - 58.0" Length R 850 - 60.0" Length R 850 - 64.0" Length R 850 - 66.0" Length R 850 - 68.0" Length R 850 - 72.0" Length R 850 - 75.0" Length R 1000/1200 - 60.0" Length R 1000/1200 - 64.0" Length R 1000/1200 - 80.0" Length	2	12	30087-000	R 1000/1200 Lube Fitting	2
				13	10363-000 10364-000 15424-000	*End Bushing R 850 - 6.0" Length R 850 - 7.0" Length R 1000/1200 - 7.75" Length	4
				14	21140-026 21140-043 21140-024 21140-042	<b>End Bushing Adapter Kit, One Wheel End</b> R 850 - w/Adapter Tube R 850 - w/Special Nut R 1000/1200 - w/Adapter Tube R 1000/1200 - w/Tube and Nut	
				15	13422-	Torque Rod Assembly, See chart below	4
				16	06966-000	Torque Rod Bushing	8
				17	45000-011	<b>Torque Rod End Adapter Kit</b>	8
				18	65133-000	Torque Rod Frame Bracket	4
				19		***Torque Rod Axle Bracket	4

NOTE: \* Hendrickson recommends the use of OTC installation tools for bushing replacement.

\*\* R 850 does not offer Bronze Center Bushing except as derated R 650. See R 650 for part number.

\*\*\* Not supplied by Hendrickson, used for reference only. Refer to vehicle manufacturer or axle bracket supplier for more information. Hendrickson is not responsible for components supplied by vehicle manufacturer.

\*\*\*\* Refer to Hendrickson Literature No. 59310-004 for mandatory use of transverse torque rods.

## Torque Rod Assembly Selection Guide

Key No. 15

TORQUE ROD ASSEMBLY									
Length in mm	Part No.	Length in mm	Part No.	Length in mm	Part No.	Length in mm	Part No.	Length in mm	Part No.
412.8	13422-019	546.1	13422-039	614.4	13422-052	692.2	13422-011	787.4	13422-025
476.3	13422-060	552.5	13422-068	622.3	13422-017	698.5	13422-040	806.5	13422-020
495.3	13422-036	558.8	13422-029	628.7	13422-055	704.9	13422-045	812.8	13422-012
508.0	13422-013	571.5	13422-026	635.0	13422-031	711.2	13422-070	825.5	13422-004
520.7	13422-067	577.9	13422-069	647.7	13422-023	723.9	13422-024	838.2	13422-003
533.4	13422-056	584.2	13422-063	660.4	13422-005	743.0	13422-046	889.0	13422-008
536.6	13422-022	596.9	13422-044	673.1	13422-002	749.3	13422-071	896.9	13422-061
539.8	13422-064	603.3	13422-014	679.5	13422-010	762.0	13422-009	914.4	13422-001
541.3	*13422-053	609.6	13422-027	685.8	13422-033	781.1	13422-018	1016.0	13422-037

\* No longer available, replaced by 13422-064



■ Cross Tube Selection Guide

Key No. 7

CROSS TUBE							
R 400/403/460/463/480/503		R 520/523		R 650/850		R 1000/1200	
Length	Part Number	Length	Part Number	Length	Part Number	Length	Part Number
33¾"	44643-027	46"	07622-003	34¾"	10397-015	44½"	13504-004
40¾"	44643-011	53"	07622-018	40"	10397-018	46"	13504-008
42"	44643-008	64"	07622-031	40¾"	10397-014	46¾"	13504-002
44⅞"	44643-009	68"	07622-014	41"	10397-019	49"	13504-001
46"	44643-003			41¾"	10397-009	53"	13504-012
47"	44643-002			42"	10397-001	54¾"	13504-006
48"	44643-001			42½"	10397-021	56"	13504-013
49¼"	44643-024			43¾"	10397-017	59"	13504-005
51"	44643-015			44¾"	10397-002	60¼"	13504-003
53"	44643-018			46"	10397-010	62¼"	13504-011
54½"	44643-017			46½"	10397-020		
57"	44643-010			47½"	10397-027		
64"	44643-028			50"	10397-013		
68"	44643-014			51¼"	10397-003		
77"	44643-029			52¾"	10397-006		
127"	44643-030			54"	10397-025		
				56½"	10397-016		
				61¼"	10397-008		
				62¾"	10397-031		
				67½"	10397-004		
				75¾"	10397-029		

This is a general parts list to provide directional information. Components may vary by model. Questions in regards to parts, contact Hendrickson Truck Parts at 1.866.755.5968 (Toll-free U.S. and Canada), 630.910.2800 (Outside U.S. and Canada) or e-mail: truckparts@hendrickson-intl.com.

www.hendrickson-intl.com



Truck Commercial Vehicle Systems  
800 South Frontage Road  
Woodridge, IL 60517-4904 USA

1.866.755.5968 (Toll-free U.S. and Canada)  
630.910.2800 (Outside U.S. and Canada)  
Fax 630.910.2899