

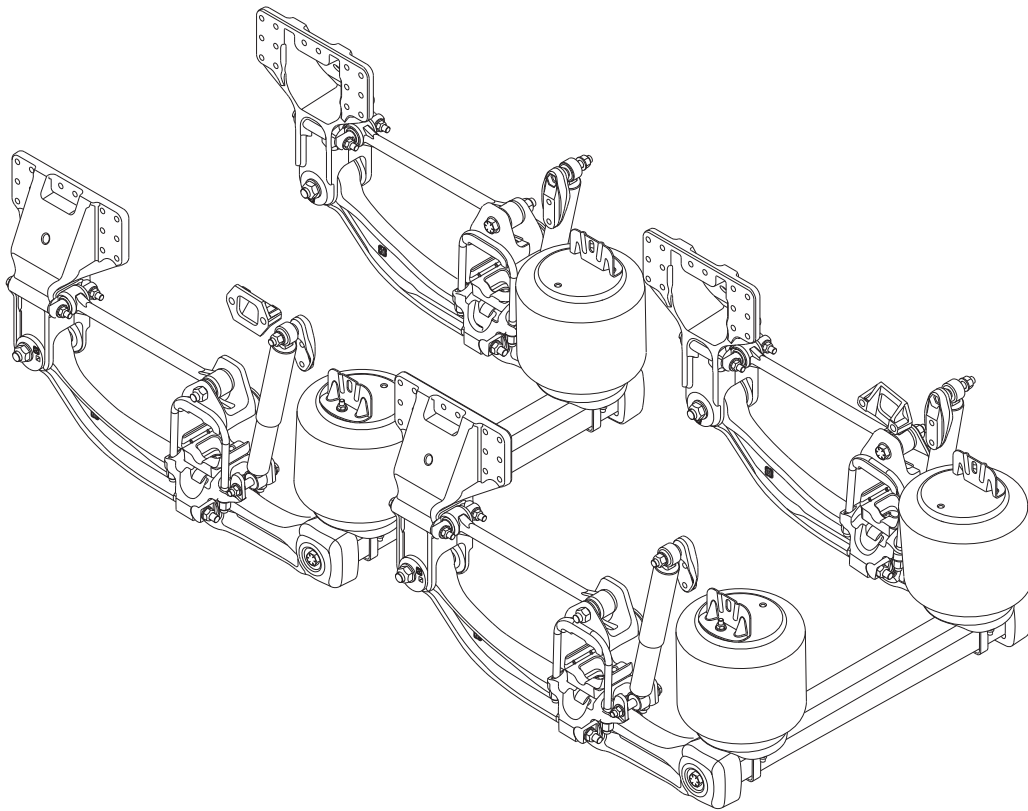
PARTS LIST

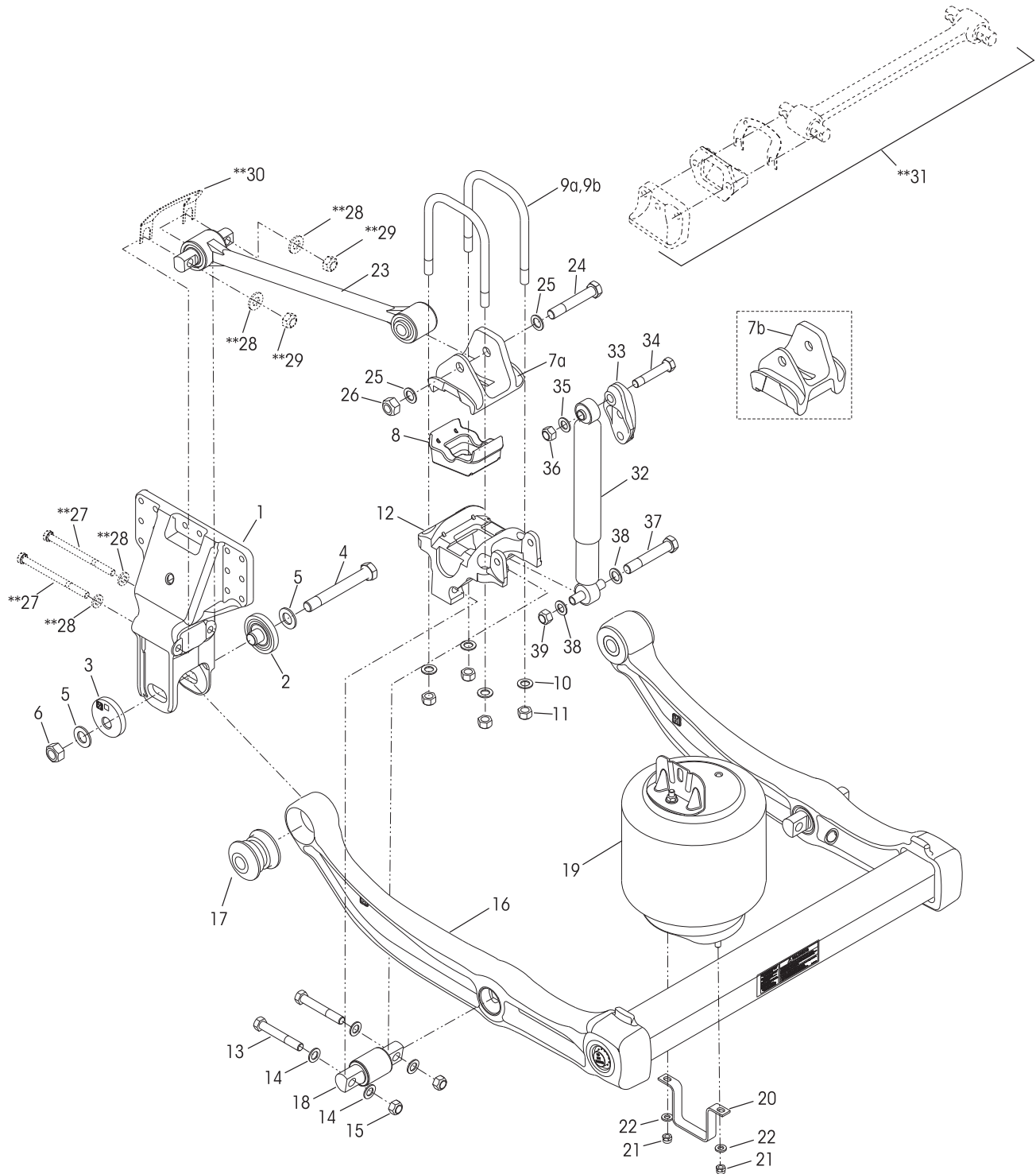
PRIMAAX[®] EX / PRIMAAX[®]
for Mack Vehicles

LIT NO: SP-231

DATE: December 2011

REVISION: A







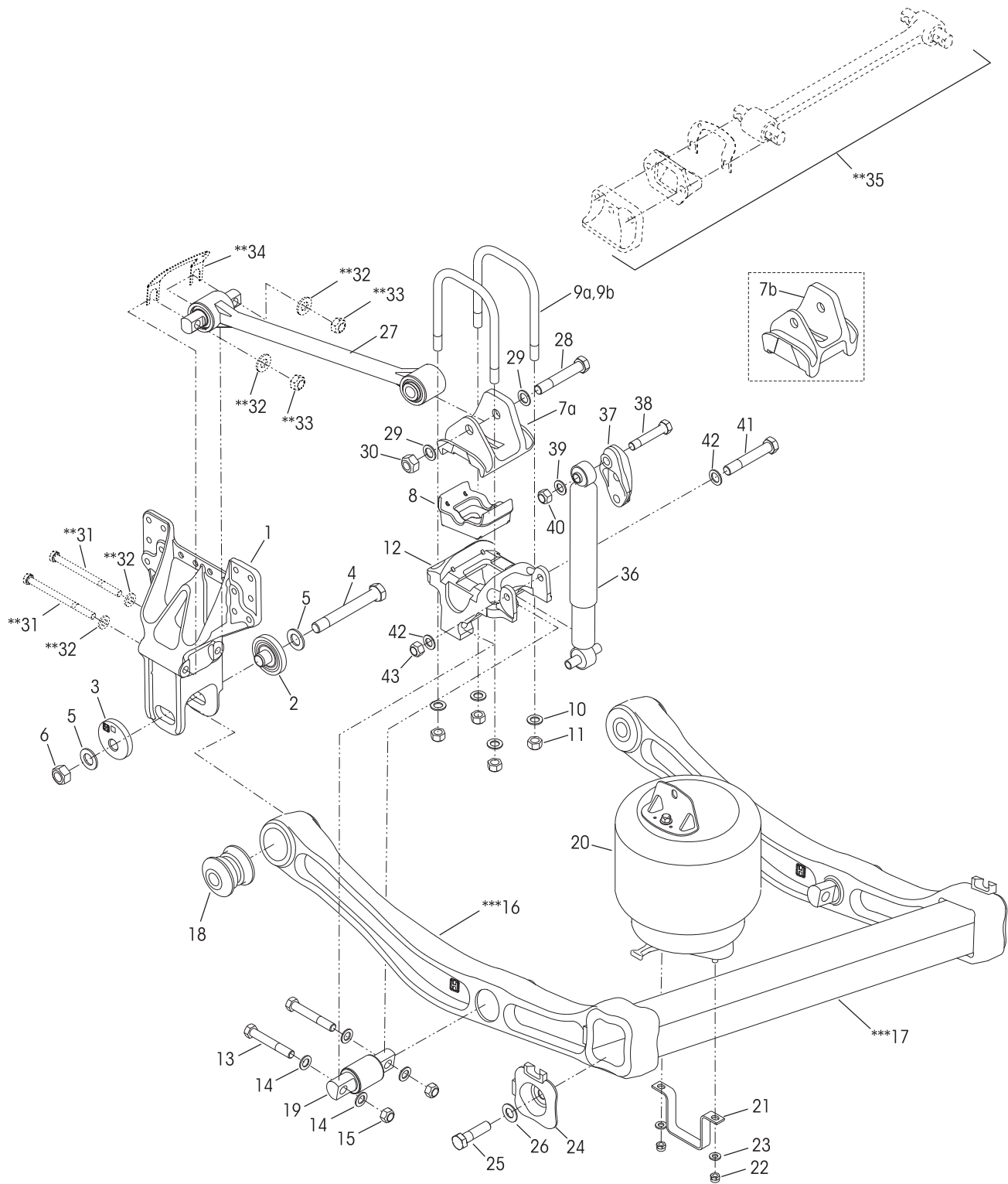
KEY NO.	PART NO.	DESCRIPTION	*NO.REQ.	KEY NO.	PART NO.	DESCRIPTION	*NO.REQ.
1	67222-000	Frame Hanger	4	17	58648-000	QUIK-ALIGN Pivot Bushing	4
	60632-020	QUIK-ALIGN Pivot Bushing Service Kit, Axle Set , Includes Key Nos. 2-6, 17		18	60383-000	D-Pin Bushing	4
	60632-019	QUIK-ALIGN Collar Service Kit, One Wheel End , Includes Key Nos. 2-6			60961-230	Air Spring Assembly Service Kit, One Wheel End , Includes Key Nos. 19-22	
	60632-018	QUIK-ALIGN Pivot Bolt Service Kit, One Wheel End , Includes Key Nos. 4-6		19	67043-002	Air Spring Assembly	4
2	64633-000	QUIK-ALIGN Concentric Collar	4	20	60911-002	Lower Air Spring Mounting Bracket	4
3	64632-000	QUIK-ALIGN Eccentric Collar	4	21	17700-010	½"-13 UNC Locknut	8
4	68217-000	1.0"-14 UNF-2A H-Coat 7.5" Hex Bolt	4	22	22962-014	½" Flat Washer	8
5	68232-000	1.0" H-Coat Flat Washer	8	23	67274-XXX	Longitudinal Torque Rod Assembly, Replaces 64981-XXX (See pinion angle chart below)	4
6	68218-000	1.0"-14 UNF-2B H-Coat Locknut	4		58821-012	Longitudinal Torque Rod Rear Bolt Service Kit, One Side Only , Includes Key Nos. 24-26	
7		Top Pad	4	24	30418-009	⅞"-14 UNF-2A 5.5" Hex Bolt	4
a	60877-001	8.5" Ride Height		25	22962-034	⅞" Flat Washer	8
b	65641-000	10" Ride Height		26	29248-000	⅞"-14 UNF-2B Locknut	4
8	65139-003	Axle Spacer, 8.5" Ride Height (if equipped)	4	27		**M16 x 2 6G Bolt	8
		U-bolt Service Kit, One Wheel End , Includes Key Nos. 9a, 10-11		28		**M16 Washer	16
	48718-125	8.5" Ride Height, Includes Key Nos. 9a, 10-11		29		**M16 x 2 6H Locknut	8
	48718-126	10" Ride Height, Includes Key Nos. 9b, 10-11		30		**Shim (may or may not required)	As req.
9		U-bolt	8	31		**Transverse Rod Assembly	2
a	59367-004	¾" Square 10.375"			60961-106	Shock Absorber Service Kit, One Wheel End , Includes Key Nos. 32, 34-39	
b	59367-009	¾" Square 10.0"		32	60657-007	Shock Absorber	4
10	22962-001	¾" Flat Washer	16	33	67463-006	Shock Upper Frame Bracket	4
11	49685-000	¾"-16 UNF U-bolt Locknut	16	34	50764-010	¾"-10 UNC 4.25" Upper Shock Bolt	4
12	60556-XXX	Bottom Cap (See pinion angle chart below)	4	35	22962-001	¾" Flat Washer	4
	34013-107	D-Pin Service Kit, One Wheel End , Includes Key Nos. 13-15, 18		36	49842-000	¾"-10 UNC Locknut	4
13	21867-036	¾"-16 UNF 5.0" Bolt	8	37	32043-017	⅝"-11 UNC 6.0" Lower Shock Bolt	4
14	22962-001	¾" Flat Washer	16	38	22962-004	⅝" Flat Washer	8
15	30191-000	¾"-16 UNF Locknut	8	39	47764-000	⅝"-11 UNC-2B Locknut	4
16		U-beam Assembly (see chart below) Includes Key Nos. 17-18		Not Shown		**Height Control Valve Assembly	1
	67249-003	Rear	1	Not Shown		**Height Control Valve Linkage	1
	67249-004	Front	1				

NOTE: * Quantities shown are for a tandem configuration.

** Item Required, component supplied by vehicle manufacturer. Hendrickson is not responsible for components not supplied by Hendrickson, for assistance with maintenance and rebuild instructions on these components see vehicle manufacturer.

Pinion Angle Chart			
8.5" RIDE HEIGHT			
PINION ANGLE	BOTTOM CAP PART NO.	LONGITUDINAL TORQUE ROD	
		LENGTH	PART NO. <i>Replaces 64981-xxx</i>
2.5°	60556-025	530 mm	67274-530
6.0°	60556-060		
8.0°	60556-120	550 mm	67274-550
10.0°	60556-100	575 mm	67274-575
10.5°	60556-105		
11.0°	60556-110		
11.5°	60556-115		
12.0°	60556-120		
13.0°	60556-130		
13.5°	60556-135		

***U-beam Assembly Enhancement		
AFTERMARKET SERVICE KIT NO. 69565-001, AXLE SET		
CONTENTS		
PART NO.	DESCRIPTION	QTY.
69351-000	Sikaflex 221 Polyurethane Sealant, 300 ml Tube	1
69432-000	Tamper Resistant Cap	2
69570-000	Loctite® 277 - 10 ml Bottle	1
50104-006	⅞"-9 UNC 4.0" Hex Bolt	2
22962-042	⅞" H-Coat Flat Washer	2
<p>*** In the event any service to the suspension requiring disassembly of a U-beam assembly equipped with integrated end caps, the Loctite 277, tamper resistant caps and Sikaflex 221 polyurethane sealant must be properly installed to ensure components function to their highest efficiency. The enhancement components can be purchased individually or as an aftermarket service kit.</p>		





KEY NO.	PART NO.	DESCRIPTION	*NO.REQ.	KEY NO.	PART NO.	DESCRIPTION	*NO.REQ.
1	65702-001	Frame Hanger	4		60961-062	Air Spring Assembly Service Kit, One Wheel End, Includes Key Nos. 20-23	
	60632-008	QUIK-ALIGN Pivot Bushing Service Kit, Axle Set, Includes Key Nos. 2-6, 18		20	60271-002	Air Spring Assembly	4
	60632-006	QUIK-ALIGN Collar Service Kit, One Wheel End, Includes Key Nos. 2-6		21	60911-000	Lower Air Spring Mounting Bracket	4
	60632-005	QUIK-ALIGN Pivot Bolt Service Kit, One Wheel End, Includes Key Nos. 4-6		22	17700-010	½"-13 UNC Locknut	8
2	64633-000	QUIK-ALIGN Concentric Collar	4	23	22962-014	½" Flat Washer	8
3	64632-000	QUIK-ALIGN Eccentric Collar	4	24	60822-000	End Cap	4
4	68217-000	1.0"-14 UNF-2A H-Coat 7.5" Hex Bolt <i>Replaces 64107-000</i>	4	25	50104-003	⅞"-9 UNC 3.5" Hex Bolt	4
5	68232-000	1.0" H-Coat Flat Washer <i>Replaces 22962-035</i>	8	26	22962-034	⅞" Dacromet Flat Washer	4
6	68218-000	1.0"-14 UNF-2B H-Coat Locknut <i>Replaces 64108-000</i>	4	27	67274-XXX	Longitudinal Torque Rod Assembly, Includes Key Nos. 28-29, (<i>Replaces 64981-XXX, see pinion angle chart on page 3</i>)	4
7		Top Pad	4		58821-012	Longitudinal Torque Rod Rear Bolt Service Kit, One Wheel End, Includes Key Nos. 28-30	
a	60877-001	8.5" Ride Height		28	30418-009	⅞"-14 UNF-2A 5.50" Hex Bolt	4
b	65641-000	10" Ride Height		29	22962-034	⅞" Dacromet Flat Washer	8
8	65139-003	Axle Spacer, 8.5" Ride Height (if equipped) U-bolt Service Kit, One Wheel End,	4	30	29248-000	⅞"-14 UNF-2B Locknut	4
	48718-125	8.5" Ride Height, Includes Key Nos. 9a, 10-11		31		**M16 x 2 6G Bolt	8
	48718-126	10" Ride Height, Includes Key Nos. 9b, 10-11		32		**M16 Washer	16
9		U-bolt	8	33		**M16 x 2 6H Locknut	8
a	59367-004	¾" Square 10.375"		34		**Shim (may or may not be required)	As req
b	59367-009	¾" Square 10.0"		35		**Transverse Rod Assembly	2
10	22962-001	¾" Flat Washer	16		60961-106	Shock Absorber Service Kit, One Wheel End, Includes Key Nos. 36, 38-43	
11	49685-000	¾"-16 UNF U-bolt Locknut	16	36	60657-007	Shock Absorber	4
12	60556-XXX	Bottom Cap <i>(See pinion angle chart on page 3)</i>	4	37	67463-006	Shock Upper Frame Bracket <i>Replaces 65000-006</i>	4
	34013-107	D-Pin Service Kit, One Wheel End, Includes Key Nos. 13-15, 19		38	50764-010	¾"-10 UNC 4.25" Upper Shock Bolt	4
13	21867-036	¾"-16 UNF 5.0" Bolt	8	39	22962-001	¾" Flat Washer	4
14	22962-001	¾" Flat Washer	16	40	49842-000	¾"-10 UNC Locknut	4
15	30191-000	¾"-16 UNF Locknut	8	41	32043-017	⅝"-11 UNC 6.0" Lower Shock Bolt	4
16		***Support Beam Assembly (<i>60831-XXX, see replacement guide below</i>)		42	22962-004	⅝" Flat Washer	8
17		***Cross Tube (<i>60912-001, see replacement guide below</i>)		43	47764-000	⅝"-11 UNC-2B Locknut	4
18	58648-000	QUIK-ALIGN Pivot Bushing	4	Not Shown		**Height Control Valve Assembly	1
19	60383-000	D-Pin Bushing	4	Not Shown		**Height Control Valve Linkage	1

NOTE: * Quantities shown are for a tandem configuration.

** Item Required, component supplied by Vehicle Manufacturer. Hendrickson is not responsible for components not supplied by Hendrickson, for assistance with maintenance and rebuild instructions on these components see vehicle manufacturer.

*** No longer available for service, see replacement guide below. For more information, refer to Hendrickson Technical Bulletin SEU-0229 or contact Hendrickson Tech Services.

SUPPORT BEAM AND CROSS TUBE ASSEMBLY REPLACEMENT GUIDE				
Key No.	Description	Current Part No.	Replacement Kit No.	Comments
16	Support Beam Assembly	60831-003 (LHF) 60831-004 (RHF)	60961-237	Requires the replacement of associated suspension parts on one axle.
		60831-001 (LHR) 60831-002 (RHR)	60961-238	Replacement Kit includes two new support beam assemblies, one cross tube, two air spring assemblies, air spring fasteners, QUIK-ALIGN fasteners and D-pin fasteners.
17	Cross Tube	60912-001	60961-237 (Forward) 60961-238 (Rear)	

This is a general parts list to provide directional information. Components may vary by model. Questions in regards to parts, contact Hendrickson Truck Parts at 1.866.755.5968 (Toll-free U.S. and Canada), 630.910.2800 (Outside U.S. and Canada) or e-mail: truckparts@hendrickson-intl.com.

www.hendrickson-intl.com



Truck Commercial Vehicle Systems
800 South Frontage Road
Woodridge, IL 60517-4904 USA

1.866.755.5968 (Toll-free U.S. and Canada)
630.910.2800 (Outside U.S. and Canada)
Fax 630.910.2899