

# **H** PARTS LIST

## VANTRAAX® HKAT 69K23 / 69K25 PARTS LIST

LIT NO: L1079

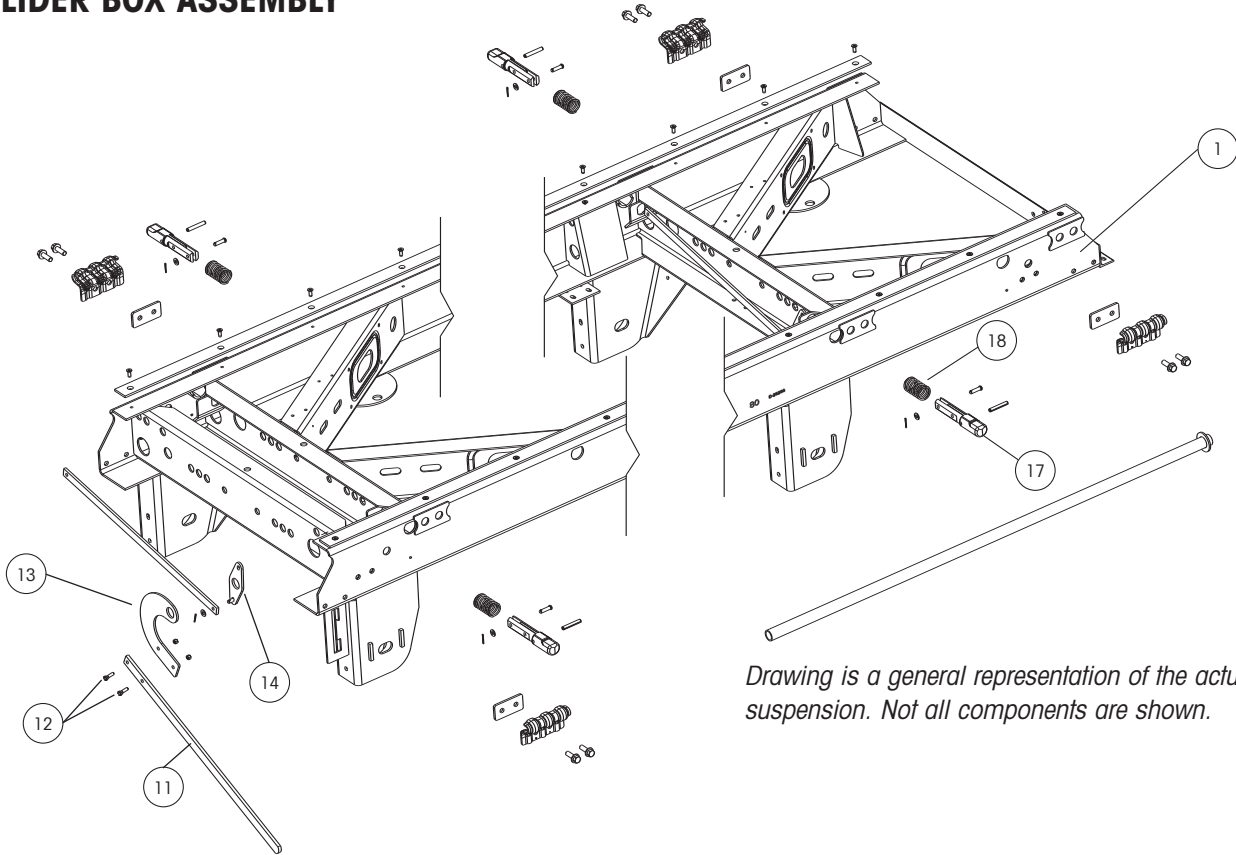
DATE: September 2011

---



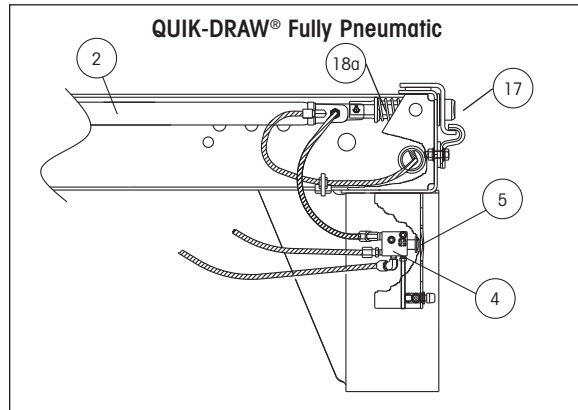
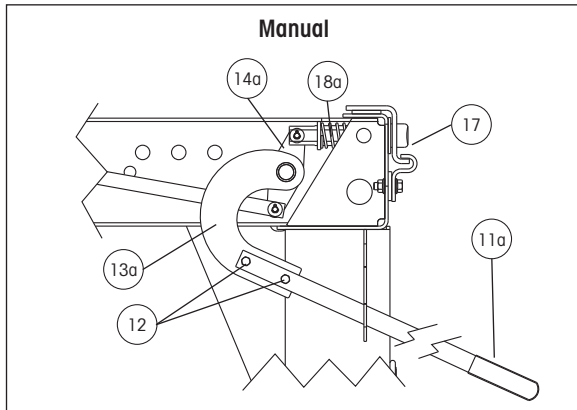


**SLIDER BOX ASSEMBLY**

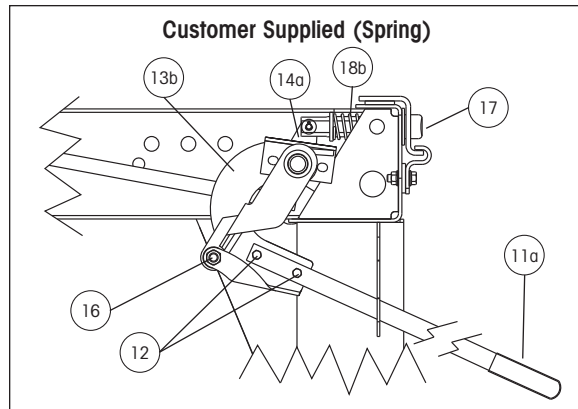
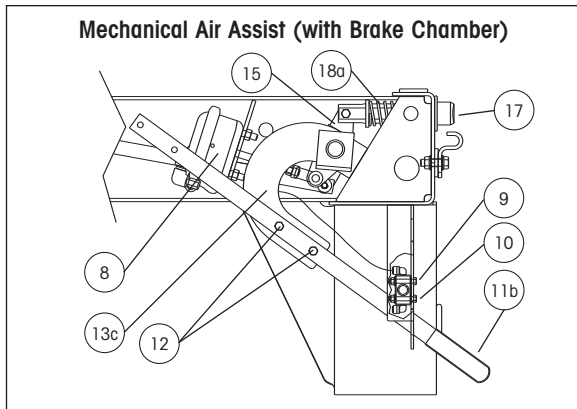


*Drawing is a general representation of the actual suspension. Not all components are shown.*

**CURRENT PRODUCTION PIN-PULL RELEASE MECHANISMS**



**NO LONGER AVAILABLE ON PRODUCTION MODELS OR BOX REPLACEMENTS.  
PARTS FOR THESE MECHANISMS ARE STILL AVAILABLE.**



**SLIDER BOX ASSEMBLY**

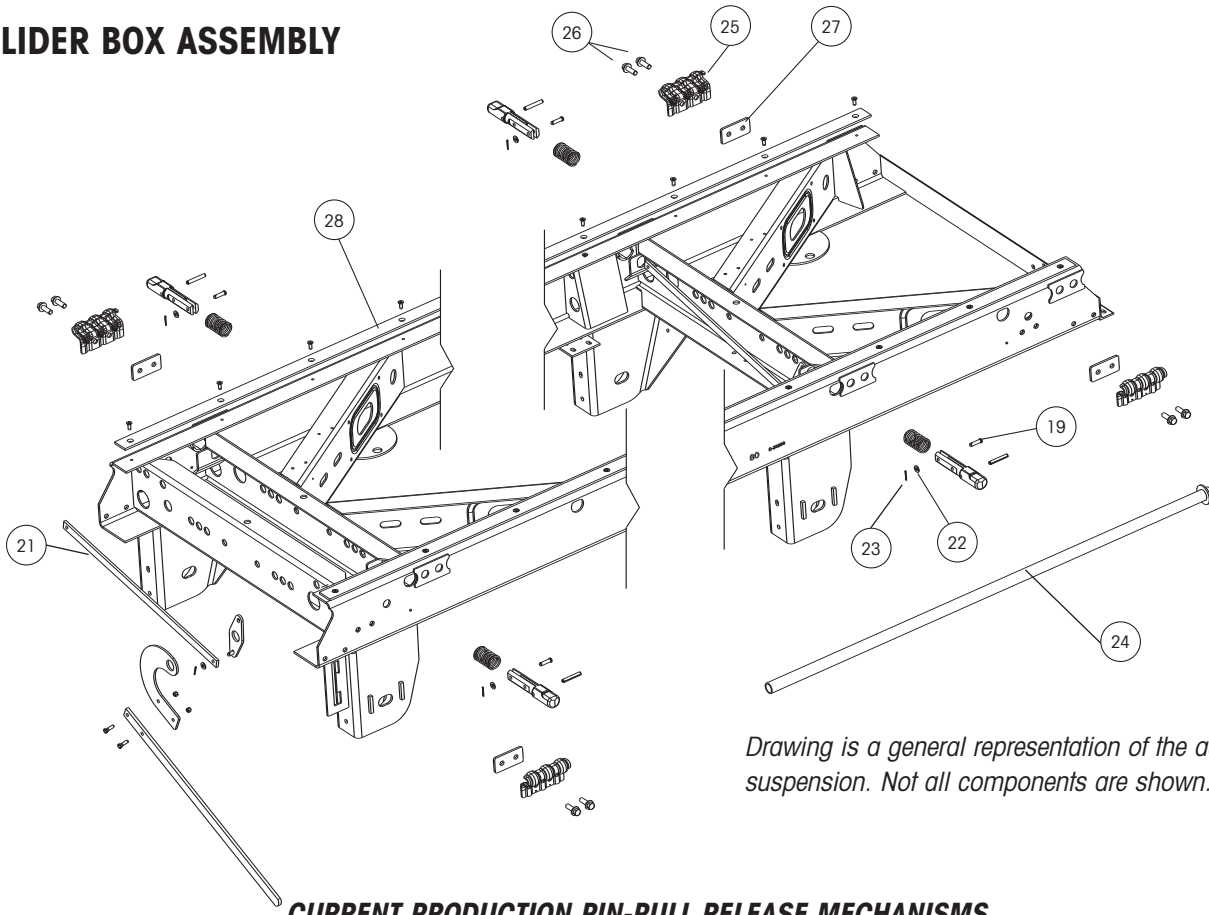
| ITEM | DESCRIPTION   | PART NO.  | SYSTEM QTY. | NOTE  |
|------|---|-----------|-------------|---|
| 1    | AFTERMARKET BOX REPLACEMENT   | AMBOX.### | 1           | Please contact Hendrickson for assistance                     |
| 2    | <b>QUIK-DRAW® PNEUMATIC PIN-PULL MECHANISM</b>  |           |             |   |
| 2a   | Front linear actuator with fittings, 42" box  | S-28061-1 | 1           |   |
| 2b   | Rear linear actuator with fittings, 42" box   | S-28062-1 | 1           |   |
| 2c   | Front linear actuator with fittings, 48" and 54" box  | S-28061-2 | 1           | Also order Pin Extensions for 54" box                         |
| 2d   | Rear linear actuator with fittings, 48" and 54" box   | S-28062-2 | 1           | Also order Pin Extensions for 54" box                         |
| 3    | <b>PIN EXTENSION 54" BOX WIDTH</b> (not shown)  | S-27836   | 4           | 54" box is used with wide-base tires                          |
| 4    | <b>QUIK-DRAW VALVE</b>  |           |             |   |
| 4a   | Three-way auto reset valve  | VS-25223  | 1           | Includes valve only   |
| 4b   | Three-way auto reset valve assembly with fittings   | VS-25224  | 1           | Includes valve and fittings                                   |
| 5    | <b>QUIK-DRAW VALVE KNOB with SCREW SET</b>  | VS-25849  | 1           | Only for older valve with plastic knob                        |
| 6    | <b>QUIK-DRAW VALVE SPACER</b> (not shown)   | B-25284   | 1           |   |
| 7    | <b>QUIK-DRAW RETROFIT KIT</b> (not shown)   |           |             | Includes actuators, valve, plumbing hardware and instructions |
| 7a   | 42" box width   | D-25430-2 | 1           |   |
| 7b   | 48" box width   | D-25430-8 | 1           |   |
| 7c   | 54" box width   | D-25430-4 | 1           |   |
| 8    | <b>BRAKE CHAMBER</b>  | A-23039   | 1           | Type 12 modified  |
| 9    | <b>AIR VALVE</b> (mechanical air assist)  | VS-23224  | 1           | Includes air valve with fittings                              |
| 10   | <b>VALVE CAP</b>  | A-22977   | 1           |   |
| 11   | <b>HANDLE ASSEMBLY</b>  |           |             |   |
| 11a  | Manual  | S-25592   | 1           | Customer supplied   |
| 11b  | Mechanical air assist   | B-22923   | 1           | Handle only   |
| 12   | <b>HANDLE BOLT</b>  | SA-9000-5 | 2           | 2-3/8"-16 x 1-1/4" hex head bolt, grade 5                     |
| 13   | <b>HANDLE MOUNT</b>   |           |             |   |
| 13a  | Manual  | C-21275   | 1           |   |
| 13b  | Customer supplied   | C-23530   | 1           |   |
| 13c  | Mechanical air assist   | C-23231   | 1           |   |
| 14   | <b>CRANK WELDMENT</b>   |           |             |   |
| 14a  | Manual and customer supplied  | B-23149   | 2           | For front and rear of slider box                              |
| 14b  | Mechanical air assist - rear (not shown)  | B-23149   | 1           | For rear of slider box  |
| 15   | <b>CRANK PLATE</b>  | B-23025   | 1           | Mechanical Air Assist   |
| 16   | <b>CRANK ARM BOLT KIT</b>   | A-22041   | 1           | Includes bolt, flat washer, lock washer and nut               |
| 17   | <b>LOCKING PIN</b>  |           |             |   |
| 17a  | 1.375" diameter pin   | S-28290   | 4           | 4" body rail hole spacing (TTMA)                              |
| 17b  | 1.375" diameter pin   | S-28290   | 4           | 6" body rail hole spacing                                     |
| 17c  | 1.625" diameter pin   | S-28289   | 4           | 4" body rail hole spacing                                     |
| 18   | <b>LOCKING PIN SPRING</b>   |           |             |   |
| 18a  | 42" Box with Manual or Mechanical Air Assist or<br>48" Box with Manual, Quik-Draw® or Mechanical Air Assist | B-28930   | 4           | 3.25" spring  |
| 18b  | 42" Box with Quik-Draw or 42" and 48" Box with<br>Customer Supplied Spring Mechanism                        | B-22000   | 4           | 3.8" spring   |

Note: Narrow hanger shown. Pin pull mechanisms are identical for both wide and narrow width slider models.

Note: Identification can be found on the roadside slider box rail above the front frame bracket. There is also a blank INTRAAX tag on the inside of the curbside beam.

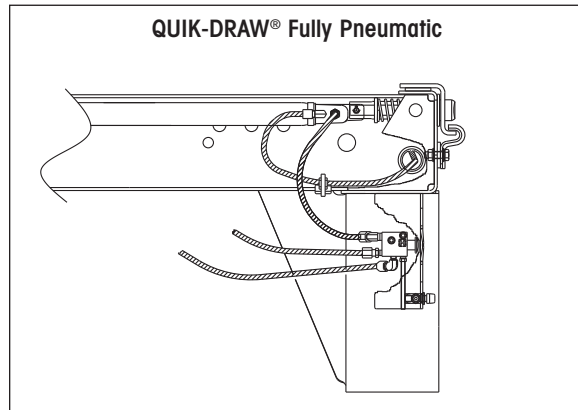
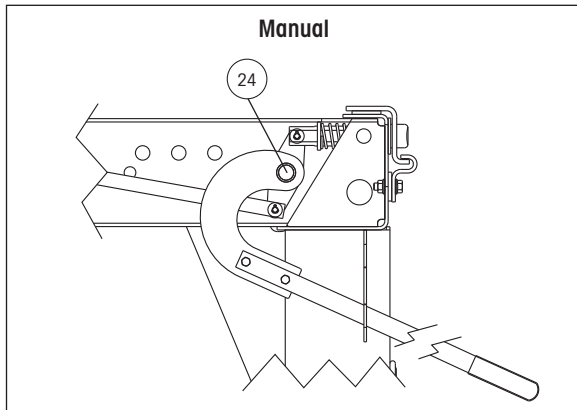


**SLIDER BOX ASSEMBLY**

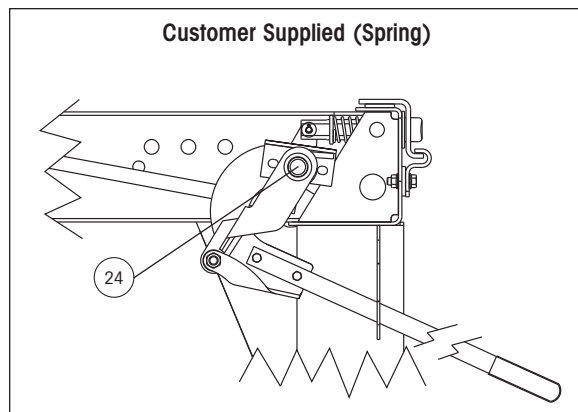
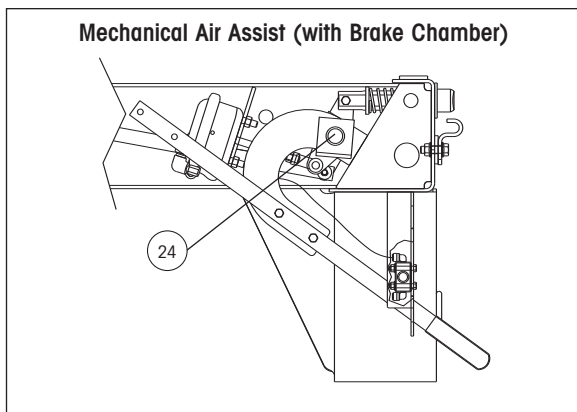


*Drawing is a general representation of the actual suspension. Not all components are shown.*

**CURRENT PRODUCTION PIN-PULL RELEASE MECHANISMS**



**NO LONGER AVAILABLE ON PRODUCTION MODELS OR BOX REPLACEMENTS.  
PARTS FOR THESE MECHANISMS ARE STILL AVAILABLE.**



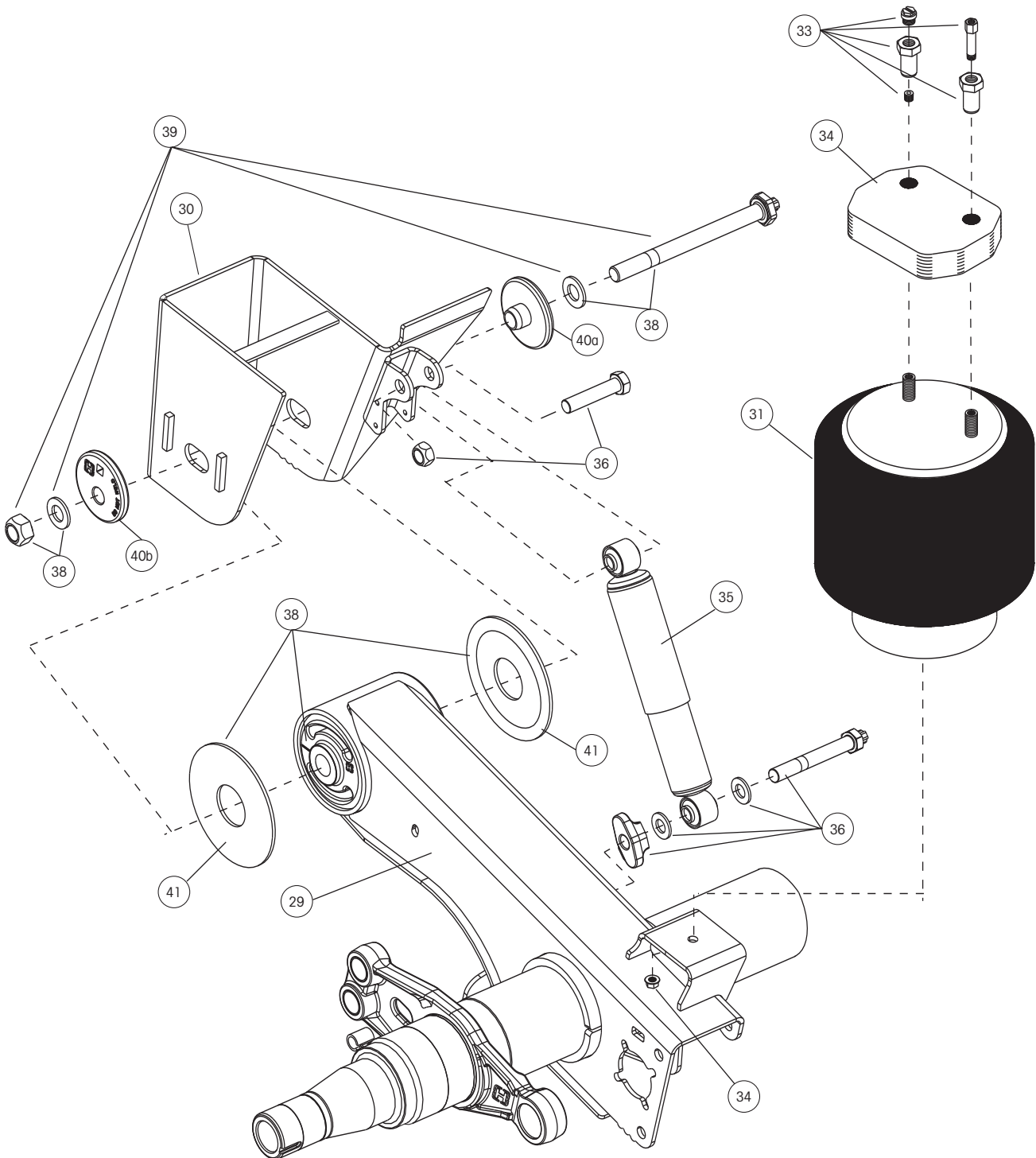
**SLIDER BOX ASSEMBLY**

| ITEM | DESCRIPTION              | PART NO.   | SYSTEM QTY. | NOTE  |
|------|--------------------------|------------|-------------|---|
| 19   | CLEVIS PIN               | SA-5200-6  | 4           | 3/8" x 1-3/8"                                   |
| 20   | PIN GUIDE (not shown)    |            |             |   |
|      | Roadside                 | S-29646-1  | 2           |   |
|      | Curbside                 | S-29646-2  | 2           |   |
| 21   | LOCKING PIN LINK         |            |             |   |
|      | 21a 42" box              | S-23150-1  | 2           |   |
|      | 21b 48" box              | S-23150-2  | 2           |   |
|      | 21c 54" box              | S-23150-3  | 2           |   |
| 22   | LOCKING PIN WASHER       | SA-1500-2  | 6           | 3/8" I.D. flat washer                           |
| 23   | LOCKING COTTER PIN       | A-29557    | 6           |   |
| 24   | PIPE WELDMENT            |            |             |   |
|      | 24a For 60" axle spacing | S-21433-2  | 3           |   |
|      | 24a For 72" axle spacing | S-21433-3  | 3           |   |
| 25   | BODY RAIL CLIP           |            |             |   |
|      | 25a 3.4" clip height     | S-24459    | 4           | Use with 4" hole centers and 1.625" locking pin |
|      | 25b 3.8" clip height     | S-24460    | 4           | Use with 6" hole centers and 1.375" locking pin |
| 26   | BODY RAIL BOLT           | SA-6900-2  | 8           | 1/2"-13" x 1-1/2" flanged bolt                  |
| 27   | BODY RAIL CLIP SPACER    | A-22367    | 6           | 2" clip hole centers                            |
| 28   | SLIDER WEAR PAD KIT      |            |             |   |
|      | 28a For 60" axle spacing | S-29204-60 | 2           | Pad with screws                                 |
|      | 28b For 72" axle spacing | S-29204-72 | 2           | Pad with screws                                 |

Note: Identification can be found on the roadside slider box rail above the front frame bracket. There is also a blank INTRAAX tag on the inside of the curbside beam.



**SUSPENSION ASSEMBLIES**



*Drawing is a general representation of the actual suspension. Not all components are shown.*



# VANTRAAX® HKAT 69K23 / 69K25 PARTS LIST

| ITEM      | DESCRIPTION  | PART NO.   | SYSTEM QTY. | NOTE  |
|-----------|--|------------|-------------|---|
| <b>29</b> | <b>HALF- TRAAX AXLE/BEAM WELDMENT</b>                | HTRAAX.### | 3           | Contact Hendrickson for assistance  |
| <b>30</b> | <b>FRAME BRACKET ASSEMBLY<sup>1</sup></b>            |            |             |   |
|           | Roadside   | S-21808-1  | 3           | 16" and 17" ride heights  |
|           | Curbside   | S-21808-2  | 3           | Contact Hendrickson for other ride heights  |
| <b>31</b> | <b>AIR SPRING</b>                                    |            |             |   |
|           | 69K23 Models Only                                    | S-21966    | 6           |   |
|           | 69K25 Models Only                                    | S-23748    | 6           |   |
| <b>32</b> | <b>AIR SPRING BOTTOM DISK (not shown)</b>            | S-21786    | 6           | 69K25 Models only   |
| <b>33</b> | <b>AIR SPRING MOUNTING KIT (per air spring)</b>      |            |             |   |
|           | <b>32a</b> 16" Ride Height                           | S-22619/2  | 6           |   |
|           | <b>32b</b> 16.5" and 17" Ride Heights                | S-22630/2  | 6           |   |
|           | <b>32c</b> 18" Ride Height                           | S-22631/2  | 6           |   |
|           | <b>32d</b> 19" Ride Height                           | S-22632/2  | 6           |   |
| <b>34</b> | <b>AIR SPRING SPACER</b>                             |            |             |   |
|           | <b>33a</b> 17" Ride Height                           | B-22510-1  | 6           | 1-1/8" thick spacer   |
|           | <b>33b</b> 18" Ride Height                           | B-22510-2  | 6           | 1-7/8" thick spacer   |
|           | <b>33c</b> 19" Ride Height                           | B-22510-3  | 6           | 3-1/8" thick spacer   |
| <b>35</b> | <b>SHOCK ABSORBER</b>                                |            |             |   |
|           | <b>35a</b> 69K23 Models Only                         | S-23566    | 6           |   |
|           | <b>35b</b> 69K25 Models Only                         | S-24023    | 6           |   |
| <b>36</b> | <b>SHOCK BOLT KIT (per shock)</b>                    | S-24021    | 6           | Includes shear bolt, spacer, washers, hex bolt and hex nut                            |
| <b>37</b> | <b>SHOCK STRAPS (not shown)</b>                      |            |             | Includes straps, clevis and nylon ties  |
|           | <b>37a</b> 69K23 Models Only                         | C-23086-1  | 6           | Use with S-23566 shock  |
|           | <b>37b</b> 69K25 Models Only                         | C-23086-2  | 6           | Use with S-24023 shock  |
| <b>38</b> | <b>TRI-FUNCTIONAL® PIVOT BUSHING KIT<sup>2</sup></b> | S-24691    | 3           | Includes (1) bushing, (1) pivot bolt kit, (2) bushing tube spacers and lubricant pack |
| <b>39</b> | <b>QUIK-ALIGN® PIVOT BOLT KIT</b>                    | S-24679    | 6           | Contains 10" bolt, nut and hardened washers   |
| <b>40</b> | <b>QUIK-ALIGN ALIGNMENT COLLARS</b>                  |            |             |   |
|           | <b>40a</b> Concentric (Inner)                        | S-20924    | 6           | Pivot hole is in center of collar   |
|           | <b>40b</b> Eccentric (Outer)                         | S-20925    | 6           | Pivot hole is offset from the center of collar  |
| <b>41</b> | <b>BUSHING TUBE SPACER</b>                           | S-21099    | 12          |   |

<sup>1</sup>Other options may exist. Contact Hendrickson for assistance.

<sup>2</sup>Bushing tool S-21307 is required to properly re-bush the suspension.

Note: Identification can be found on the roadside slider box rail above the front frame bracket. There is also a blank INTRAAX tag on the inside of the curbside beam.

---

[www.hendrickson-intl.com](http://www.hendrickson-intl.com)



Trailer Commercial Vehicle Systems  
250 Chrysler Drive, Unit #3  
Brampton, ON Canada L6S 6B6  
905.789.1030  
Fax 905.789.1033

Trailer Commercial Vehicle Systems  
2070 Industrial Place SE  
Canton, OH 44707-2641 USA

866.RIDEAIR (743.3247)  
330.489.0045  
Fax 800.696.4416

Hendrickson Mexicana  
Av. Industria Automotriz #200  
Parque Industrial Siiva Aeropuerto  
Apodaca, N.L., México C.P. 66600  
+52 (81) 8288.1300  
Fax +52 (81) 8288.1301